



19A Hermoine Terrace Epping, VIC



2



1



1

## Modern Living

Immaculately presented and modern, this stylish single-level home delivers easy, low-maintenance living.

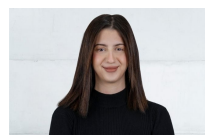
Filled with natural light, it features two generous bedrooms, a central bathroom, separate powder room, and a versatile study or retreat. The open-plan kitchen, living, and dining area flows seamlessly to a north-facing private yard with covered decking, perfect for entertaining.

Complete with quality finishes, heating and cooling, and a remote garage with internal access. Conveniently located close to parklands, schools, shops, and transport, with easy access to Epping amenities and major freeways.

For further information or to apply for this property please contact Aryanaz Moradi today on (03) 9401 2322, or by email [pm34@lovere.com.au](mailto:pm34@lovere.com.au)

**Price:** \$470 per week

**Inspect:** Saturday, 9th May 2026 10:40 - 10:50



**Aryanaz Moradi**

[loveepping@mail.inspectrealestat](mailto:loveepping@mail.inspectrealestat)