



5 Glen Valley Court Greensborough, VIC



4



2



2

This One-Of-A-Kind Abode Will No Doubt Leave A Lasting Impression

Sale by Set Negotiation - Offers close Wednesday 20th May at 5:00pm

Indulge in a higher class of living with this exquisite newly built home. A timber front door swings open to reveal an airy interior featuring a Jamieson Drystone feature wall, recycled spotted-gum sleepers (ex railway), seamless indoor-outdoor living, soaring ceilings and luxurious fixtures and fittings. A separate living room/cinema enjoys an element of privacy thanks to its secluded placement, while a spectacular open-plan kitchen, dining and living precinct captures the essence of modern living with its integration via sliding doors to a beautifully manicured yard framed by established gumtrees. The entertainer's kitchen features a large island breakfast bar, soft close drawers, bespoke marble bench tops, contemporary European appliances and a walk-in pantry. Sleeping arrangements include four bedrooms serviced by two fully tiled bathrooms and family laundry with lots of cabinetry and marble countertops. Added highlights boast Blackbutt timber floors, premium carpets, split system cooling/heating throughout, LED feature lighting, alarm and security cameras, pendant lighting, and skylights with electric shutters. Located in a wonderful family neighbourhood, in close range to parklands, sporting clubs, Greensborough Aquatic Centre, kindergartens and schools, major

arterials, Greensborough Plaza and shopping hubs.

- * Four large bedrooms are serviced by two sophisticated bathrooms along with a marble laundry with deck access
- * An open plan kitchen and meals and living and as well as a cinema room
- * Architectural design and meticulous build quality

Due diligence checklist - for home and residential property buyers
<http://www.consumer.vic.gov.au/duediligencechecklist>

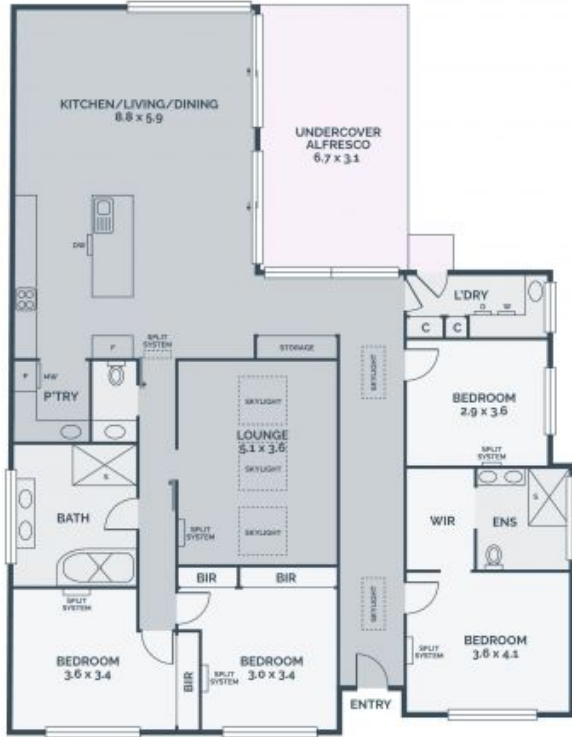
Price: \$1,580,000 - \$1,700,000
Inspect: Saturday, 9th May 2026 10:30 - 11:00
Thursday, 14th May 2026 5:45 - 6:15



Marc Romeo

0438 100 781

marc.r@lovere.com.au



Every precaution has been taken to establish accuracy of the information in this brochure but does not constitute any representation by the vendor or agent.



5 Glen Valley Court

Greensborough, VIC