



6 Pine Street Thomastown, VIC



Classic Home Offering Space And Potential

Positioned in an established pocket of Thomastown, this well-maintained residence offers generous proportions, multiple living zones and outstanding flexibility for families, first home buyers or investors.

Set on a substantial 643m2 (approx.) allotment, the home provides exceptional space both inside and out, with ample scope for future enhancement, extension or redevelopment subject to council approval.

The functional floorplan comprises three well sized bedrooms, including an oversized main bedroom with built in wardrobes. A central bathroom with bathtub services the home, while the practical layout ensures comfortable everyday living.

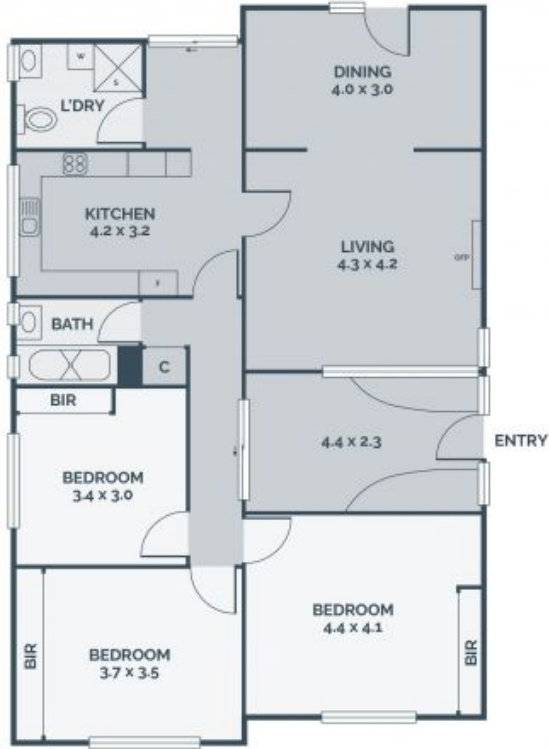
Price: Contact Agent



Ryan Di Natale
0418 330 587
ryan.d@lovere.com.au



Jude Kattan
0450 848 255
jude.k@lovere.com.au



Every precaution has been taken to establish accuracy of the information in this brochure but does not constitute any representation by the vendor or agent.