



110 Darebin Drive Thomastown, VIC

 3
  1
  2

### A Welcoming First Impression

Perfectly positioned in a well established pocket of Thomastown, this inviting residence offers a comfortable and practical lifestyle with excellent future potential. Featuring three well sized bedrooms, a functional kitchen with meals area, and a welcoming living space, this home is ideal for families, first home buyers, or savvy investors.

Set on a generous 538m2 (approx.) allotment, the property includes a central bathroom, separate toilet, and a spacious rear yard that provides ample room for outdoor entertaining, gardening, or future improvements subject to council approval. Secure off street parking and a wide driveway further enhance everyday convenience.

Conveniently located close to local schools, parklands, shopping precincts, and public transport, this property presents a fantastic opportunity to secure a solid home in a thriving and well connected neighbourhood.

**Price:** UNDER CONTRACT

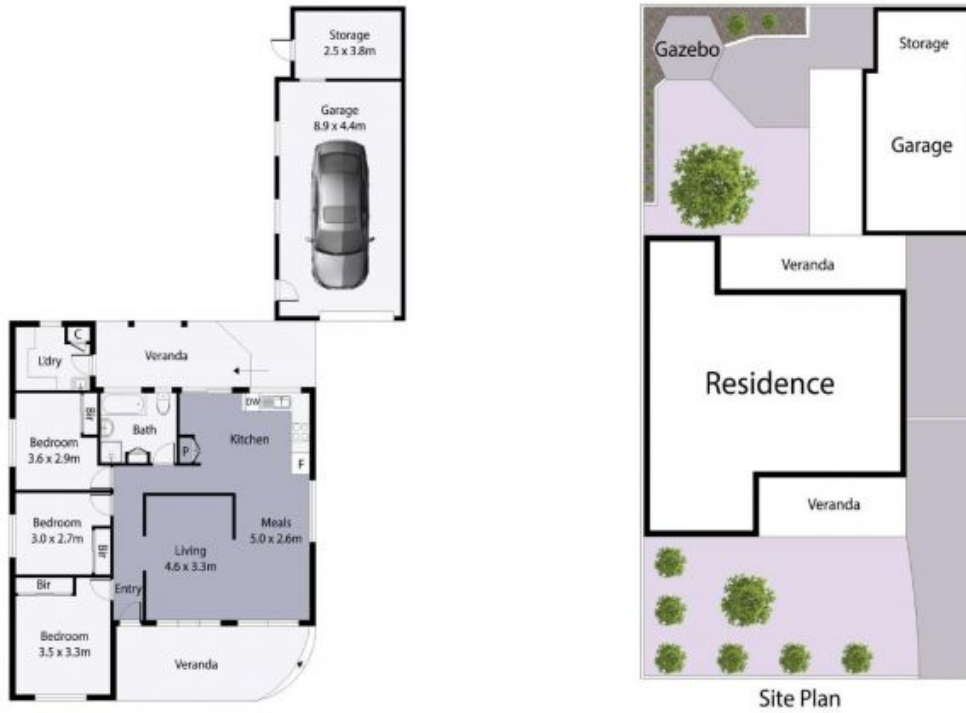


**Ryan Di Natale**  
0418 330 587  
ryan.d@lovere.com.au



**Jude Kattan**  
0450 848 255  
jude.k@lovere.com.au

# 110 Darebin Drive, Thomastown



THE ABOVE PLAN IS AN ARTIST'S IMPRESSION ONLY. IT INCLUDES ELEMENTS THAT ARE FOR DISPLAY PURPOSES ONLY AND MAY NOT BE TO SCALE. LANDSCAPING SHOWN IS INDICATIVE ONLY. DIMENSIONS ARE APPROXIMATE.

