

2/23 Cherry Court Lalor, VIC



**IMMACULATE 2 BEDDER**

If your downsizing or wanting a low maintenance investment property then look no further.

Impeccable 2 bedroom unit situated in the bowl of the court & only a short drive to Pacific Epping, Northern Hospital, Costco, both Lalor and Epping train stations and the very popular local shopping strip at May Road and Station Street.

Offering open plan living, 2 good size bedrooms, fully equipped quality kitchen and a private rear yard.

-Presents just like new.

**Price:** \$590,000



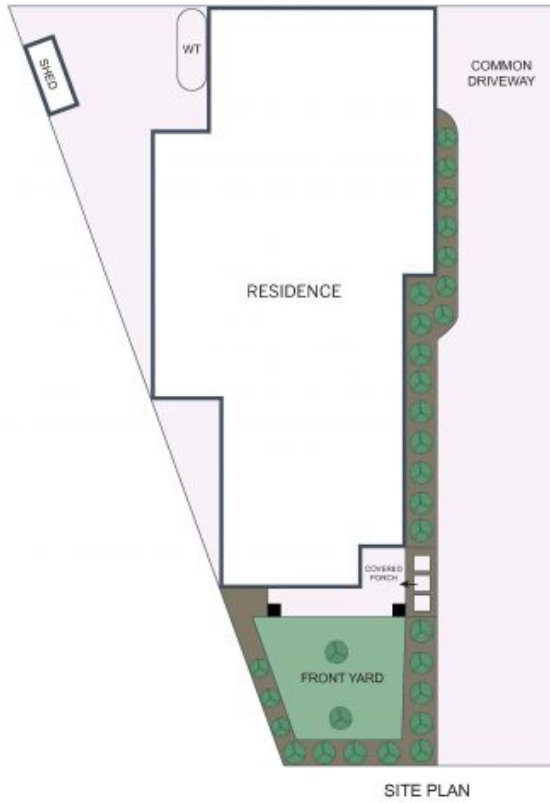
**Jim Vasiliou**

0418 123 054  
jim.v@lovere.com.au



**George Bottas**

0487798888  
george.b@lovere.com.au



Every precaution has been taken to verify the accuracy of the above details. However, prospective purchasers are advised to make their own enquiries.