



23 Savannah Crescent Epping, VIC



Brick Veneer Beauty With Potential

Enjoying an immaculate presentation on a fantastic corner allotment, this mid-century brick veneer home with its grand proportions is waiting for a family to call it their own. Loaded with stunning features, the floor plan features four spacious bedrooms with study (master with ensuite and walk in robe) serviced by a great family bathroom and laundry along with a formal living and dining nearby to an open plan kitchen and meals with rumpus. The delightful kitchen comes equipped with plentiful storage, modern appliances and vast counter space. The generous rear yard includes a large pergola/carport for outdoor entertaining along with enclosed gardens for the kids to play. Added features include polished hardwood floors, heating, cooling, window furnishings and carpets. Conveniently located within minutes to local schools, Costco, Epping Plaza, The Northern Hospital, public transport and major arterials.

Price: SOLD - \$715,000

* Four bedrooms serviced by a two bathrooms and laundry.



Jim Kalakias

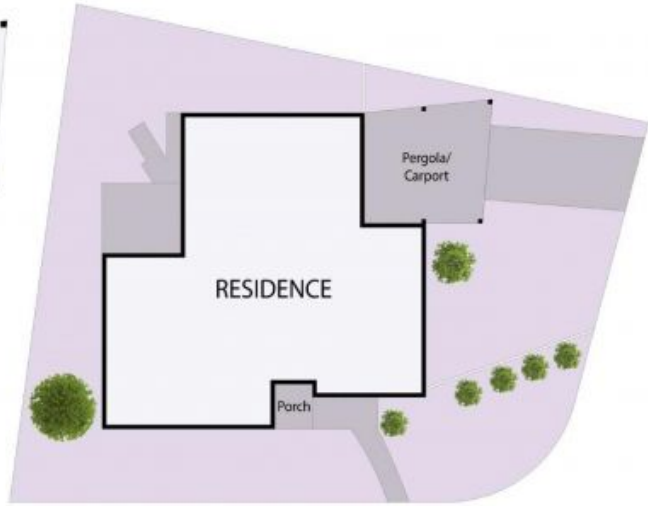
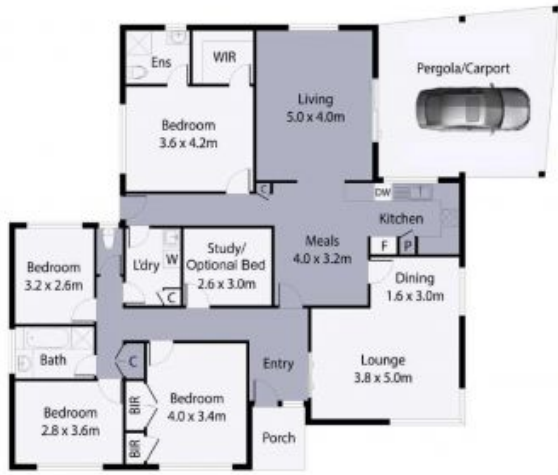
0402 177 336
jim.k@lovere.com.au



Bijan Rahimi

0451 515 301
bijan.r@lovere.com.au

23 Savannah Crescent, Epping



Site Plan

THE ABOVE PLAN IS AN ARTIST'S IMPRESSION ONLY. IT INCLUDES ELEMENTS THAT ARE FOR DISPLAY PURPOSES ONLY AND MAY NOT BE TO SCALE. LANDSCAPING SHOWN IS INDICATIVE ONLY. DIMENSIONS ARE APPROXIMATE.

