



1/24 Brand Drive Thomastown, VIC

Multi-Use Space, Endless Possibilities

Ideally positioned within a boutique complex in central Thomastown nearby to major arterials, this modern property offers outstanding functionality, presentation, and accessibility. It features two bright offices, a high-clearance warehouse/workshop/storage facility with roller door access, along with a kitchen and two bathrooms, perfect for a wide range of businesses. The dimensions on the ground floor are 293m² (approx.) and the upper level is around 106.8m² (approx.)

- * Large warehouse/workshop
- * Well-connected location that's within close range to all amenities and CBD.
- * Office spaces along with two bathrooms.
- * Rental estimate \$55000 per annum
- * 3 phase power
- * 5 car spaces

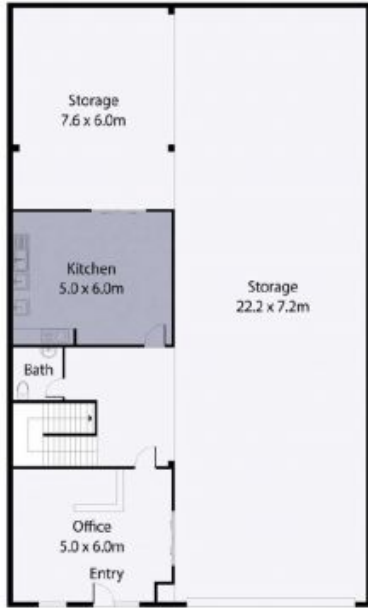
Price: SOLD - \$1,120,000



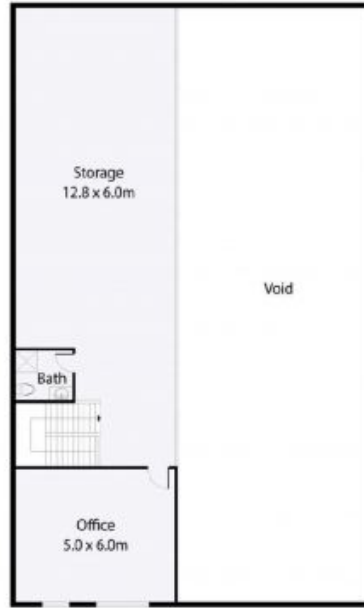
Frank Romeo
0438 010 974
frank.r@lovere.com.au

Frank Romeo
0438 010 974
frank.r@lovere.com.au

1/24 Brand Drive, Thomastown



Ground Floor



First Floor

