



100 Golf View Drive Craigieburn, VIC



4



2



2

### The One To End Your Search

This captivating home demonstrates perfectly that there's no need to compromise on space or entertaining when it comes to a low maintenance lifestyle. Whichever direction you look, this contemporary home offers something special, impressive finishes, outdoor alfresco entertaining and spacious dimensions. This sophisticated home boasts a grand open plan kitchen, meals and living zone alongside an additional lounge. The stylish kitchen showcases stone surfaces, stainless steel appliances and fabulous storage. Four double bedrooms share two bathrooms and a large laundry. Added highlights also include tiled floors, heating, cooling, window furnishings and remote double garage. Brilliantly positioned nearby to a host of local amenities, including Craigieburn Central, Craigieburn Village, schools, parklands and major arterials.

- \* Four spacious bedrooms serviced by two bathrooms.
- \* Central location within walking distance to all amenities.

**Price:** SOLD



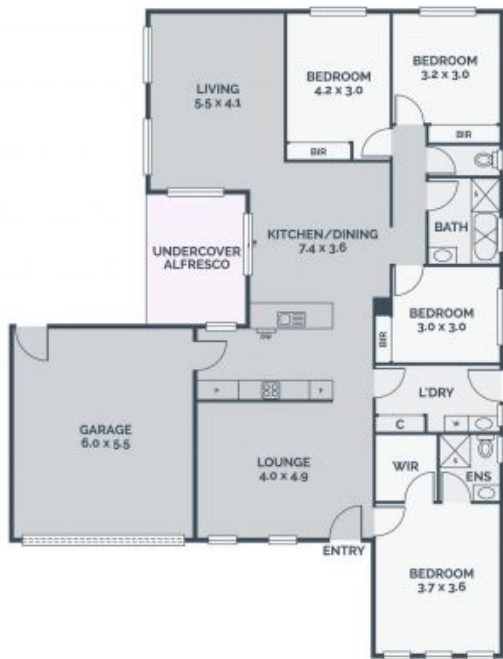
**Shane Yamin**

0417 557 972  
shane.y@lovere.com.au



**Shane Yamin**

0417 557 972  
shane.y@lovere.com.au



Every precaution has been taken to establish accuracy of the information in this brochure but does not constitute any representation by the vendor or agent.