



497 Station Street Lalor, VIC

3

1

4

### Spacious Family Living with Exceptional Potential

Situated in one of Lalor's most convenient locations, this inviting home offers an ideal blend of comfort, convenience and future possibilities. Featuring generous living spaces, a functional kitchen with adjoining meals area and well-sized bedrooms, it provides an excellent foundation for first home buyers, families or investors alike.

Set on a substantial 560 m2 (approx.) allotment, the property presents outstanding potential for renovation, extension or redevelopment (STCA). The expansive rear yard provides ample space for entertaining, gardening or future improvements, complemented by secure off-street parking.

Enjoy easy access to key amenities including local schools, parks, Station Street and May Road shopping precincts, Lalor Train Station, and major arterial roads-ensuring everyday convenience in a vibrant and family-friendly community.

**Price:** \$620,000 - \$682,000

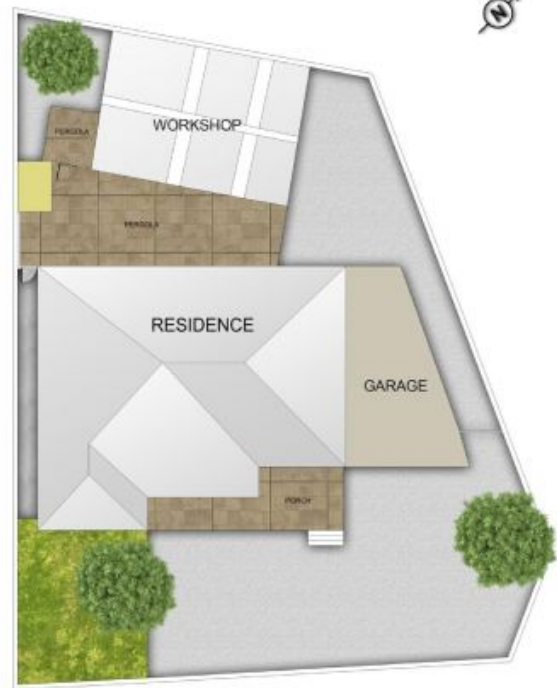


**Ryan Di Natale**  
0418 330 587  
ryan.d@lovere.com.au



**Jude Kattan**  
0450 848 255  
jude.k@lovere.com.au

# 497 Station Street, Lalor



THE ABOVE PLAN IS AN ARTIST'S IMPRESSION ONLY. IT INCLUDES ELEMENTS THAT ARE FOR DISPLAY PURPOSES ONLY AND MAY NOT BE TO SCALE. LANDSCAPING SHOWN IS INDICATIVE ONLY. DIMENSIONS ARE APPROXIMATE.

