



4 Wimmera Crescent Wollert, VIC



The Perfect Balance Of Space And Comfort

For families with a busy lifestyle, this contemporary home offers the perfect balance of space and comfort, without the burden of high maintenance. The attractive facade, complete with a double garage and easy-care gardens, is just the beginning of the low care ease this home provides. Its exceptional Wollert location also ensures access to local amenities, making your daily life more convenient. Inside, you'll find stylish ceramic tiled floors that provide a seamless transition from the entrance passageway, all the way through to the open plan living and dining precinct at the rear, that incorporates a stone kitchen with modern appliances and outstanding storage. This entire zone is cleverly designed with instant indoor-outdoor connection to the generous yard. This home features four bedrooms along with two well-appointed bathrooms and family sized laundry. Added features include an additional living zone, heating/cooling, carpets and off-street parking. Positioned within close proximity to public transport, local schools & kindergartens, shopping hubs and parklands.

Price: SOLD - \$740,000

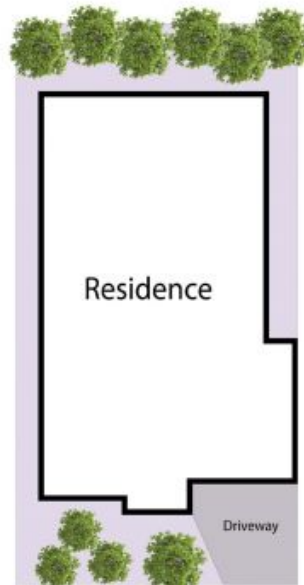
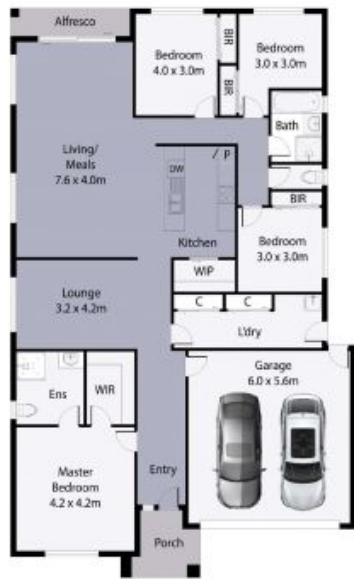


Bijan Rahimi
0451 515 301
bijan.r@lovere.com.au



Bijan Rahimi
0451 515 301
bijan.r@lovere.com.au

4 Wimmera Crescent, Wollert



Site Plan

THE ABOVE PLAN IS AN ARTIST'S IMPRESSION ONLY. IT INCLUDES ELEMENTS THAT ARE FOR DISPLAY PURPOSES ONLY AND MAY NOT BE TO SCALE. LANDSCAPING SHOWN IS INDICATIVE ONLY. DIMENSIONS ARE APPROXIMATE.

