



7 Alannah Place Ivanhoe, VIC

4

2

2

### Executive Family Luxury Living in Ivanhoe

Peacefully situated in a tightly held enclave of sophisticated residences, this contemporary, quality built single level family residence successfully delivers an idyllic blend of easy low maintenance living with absolute convenience in a blue chip locale moments from central Ivanhoe retail, cafes, restaurants, trains and grammar schools. Boasting generous living spaces flooded with natural light throughout this family home has been fully renovated throughout and is ideally suited to an executive couple/family looking for that extra special somewhere to live.

Comprising:

- \* 4 generous sized bedrooms, all with built-in robes, master with ensuite and walk-in robe
- \* Separate study/home office ? perfect for working from home
- \* Beautifully appointed kitchen with granite benchtops, stainless steel appliances servicing open plan meals and living opening to private, north facing, expansively paved outdoor area ? ideal for alfresco entertaining and enjoyment

**Price:** \$1200.00 per week

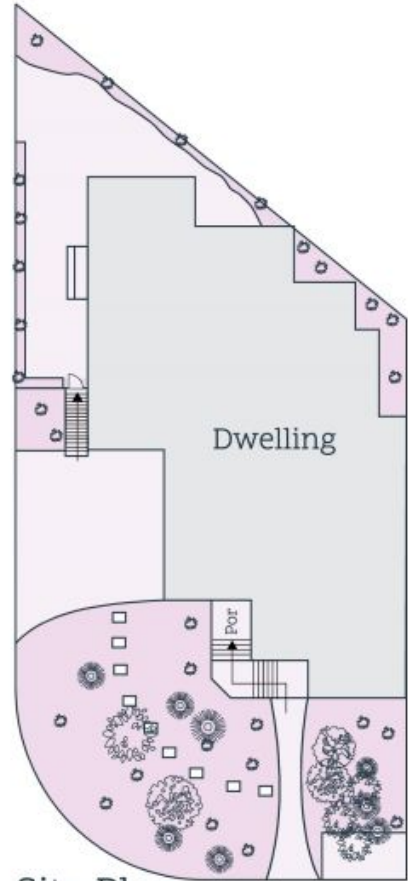
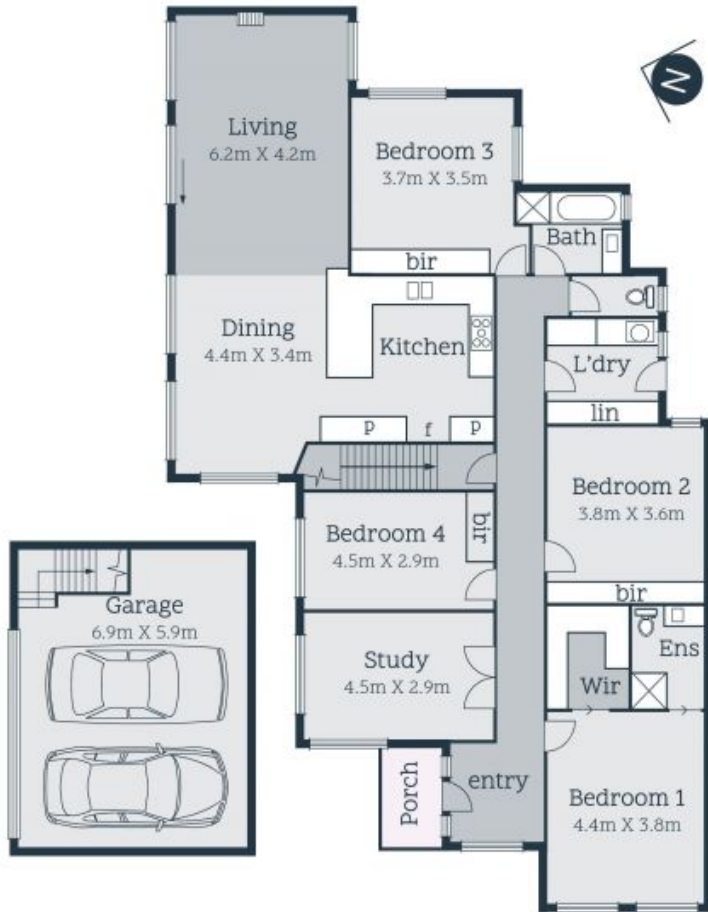


**Benita Evans**



**Benita Evans**

ire.ivanhoe@lovere.com.au ire.ivanhoe@lovere.com.au



Site Plan

Every precaution has been taken to establish accuracy of the information in this brochure but does not constitute any representation by the vendor or agent

