



22/12 Rufus Street Epping, VIC

 3

 1

 2

### Stylish Terrace Living In A Convenient Location

Step inside this inviting terrace home and be welcomed by a spacious sunken lounge, perfect for relaxing or entertaining. The well-appointed kitchen offers ample cupboard and bench space, seamlessly flowing into the adjoining meals area that opens onto a private rear courtyard - an ideal spot for outdoor dining or quiet enjoyment.

Upstairs, you'll find three generous bedrooms with built-in robes, all serviced by a central bathroom. Adding to the appeal, a rare double garage provides both convenience and security, a standout feature not often found in terrace homes.

Backing directly onto the picturesque Darebin Creek Trail, this property offers a wonderful lifestyle with walking and cycling paths at your doorstep. Enjoy the ease of being close to local shops, schools, and Epping Train Station, ensuring everything you need is just moments away.

**Price:** SOLD - \$568,000



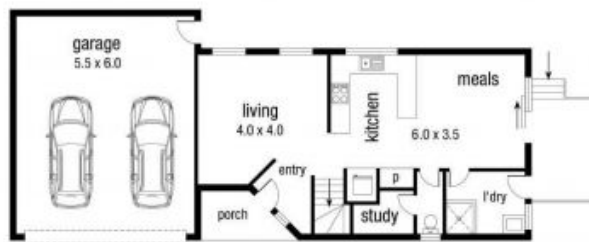
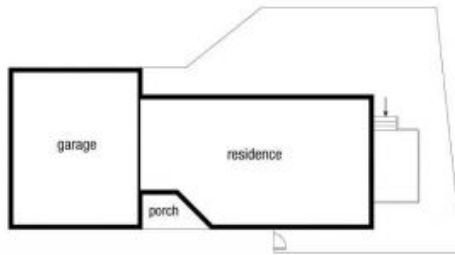
**Jim Kalakias**

0402 177 336  
jim.k@lovere.com.au



**Jim Kalakias**

0402 177 336  
jim.k@lovere.com.au



DISCLAIMER - Measurements in metres. Indicative only. Dimensions are approximate. All information contained herein is gathered from sources we believe reliable. However we cannot guarantee its accuracy and interested parties should rely on their own enquiries.