



G07A/5 Zenith Rise Bundoora, VIC

 2
  2
  1

### A Great First Home

This stylish two-bedroom apartment positioned right in the heart of Polaris will have you totally captivated with its marvellous sense of light and generous proportions. Positioned for privacy with a neutral palette, this modern residence enables a lifestyle of enviable ease. An open-plan kitchen, dining and living area offers a spacious, quiet retreat and flows out to an inviting courtyard. The kitchen satisfies with its stone bench tops, ample cabinetry and quality appliances. Sleeping accommodation includes two spacious bedrooms serviced by two large bathrooms and Euro laundry. Additional comforts also include split system heating/cooling, carpets, engineered timber floors and secure parking. All of this within perfect proximity to Plenty Road tram, parklands, RMIT, La Trobe University, local shopping and Bundoora Square.

- \* Two spacious bedrooms serviced by two stylish bathrooms.
- \* Open plan living.

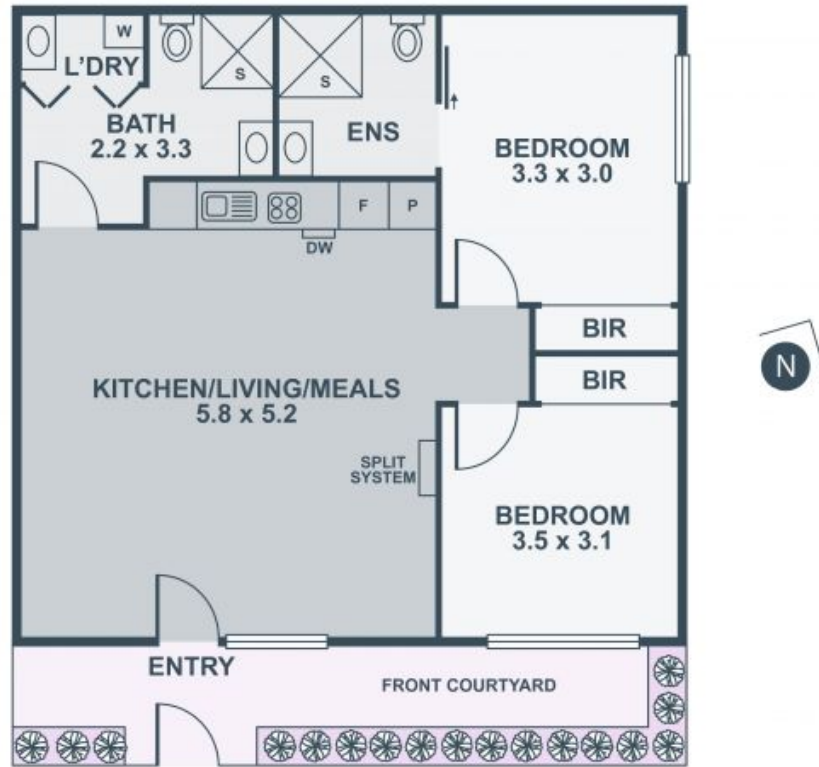
**Price:** SOLD



**Shane Yamin**  
0417 557 972  
shane.y@lovere.com.au



**Shane Yamin**  
0417 557 972  
shane.y@lovere.com.au



Every precaution has been taken to establish accuracy of the information in this brochure but does not constitute any representation by the vendor or agent.