

105/42 Rufus Street Epping, VIC



Delightful and Secure!

This lovely 2 bedroom apartment comprises:

- 2 bedrooms, both with wardrobes
- Central bathroom
- Sun filled kitchen and living
- Private balcony
- Secure under cover lock up garage
- Storage cage
- Lift access

In close proximity to schools, The Northern Hospital, Epping train station and Costco/Epping Plaza

INSPECTIONS MAY BE CANCELLED UP TO 24 HOURS PRIOR WITHOUT NOTICE. YOU MUST REGISTER TO VIEW THIS PROPERTY AT AN OPEN FOR INSPECTION AND TO BE NOTIFIED OF ANY CHANGES OR CANCELLATIONS

Price: \$440 Per Week

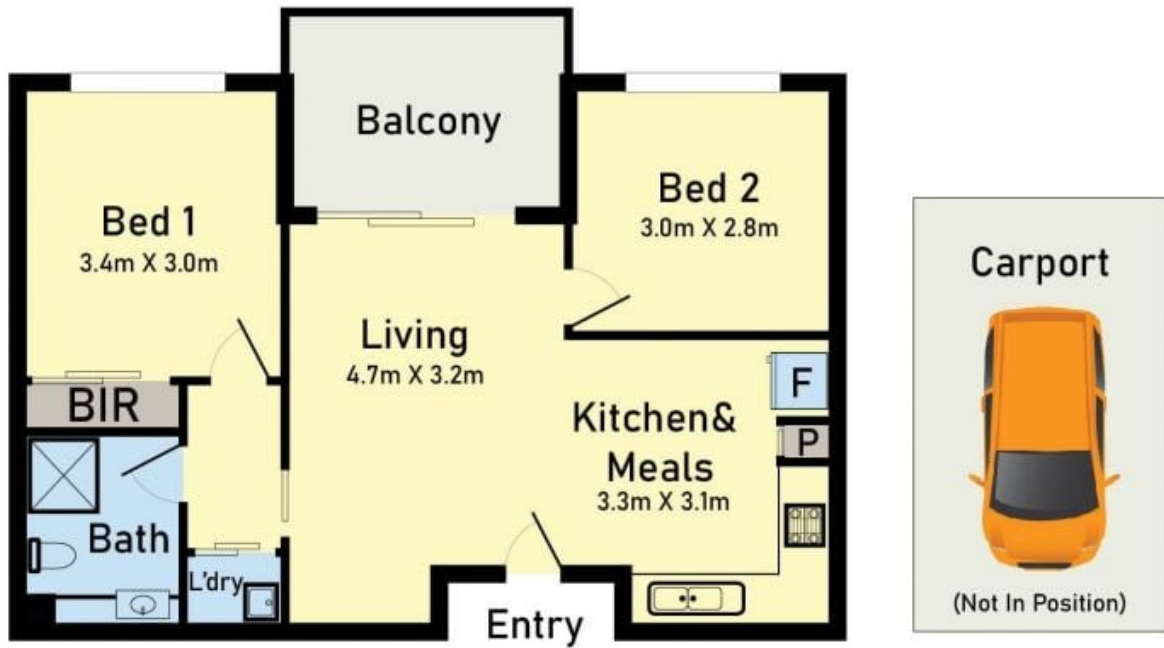


Rachael Kopp



Rachael Kopp

lovemillpark@mail.inspectrealest.com.au



105/42 Rufus Street Epping

* Dimensions are approximate and for illustrative purposes only



LOVE & CO

105/42 Rufus Street

Epping, VIC