



2 Miranda Road Reservoir, VIC



### An Impressive Collection

Single-level living, a stellar location, and immense future potential are three reasons why these two solid dwellings will generate mass appeal. These two homes are situated within close distance to local shopping, public transport, parklands and schools. Those looking to invest will be buoyed by the outstanding rental potential, while owner occupiers will appreciate the spacious dimensions and close proximity to the CBD.

Dwelling 1: Offers multiple living areas along with an open plan kitchen and dining room. The timber kitchen showcases modern appliances along with ample storage. Sleeping accommodation includes four large bedrooms serviced by an immaculate bathroom and laundry. The rear yard includes a carport, storage shed as well as off-street parking.

Dwelling 2: Features a separate living room alongside a spacious kitchen and meals area. Sleeping accommodation includes two large bedrooms alongside a central bathroom and laundry. The wow factor to this rear abode is its generous garden surrounds and off-street parking.

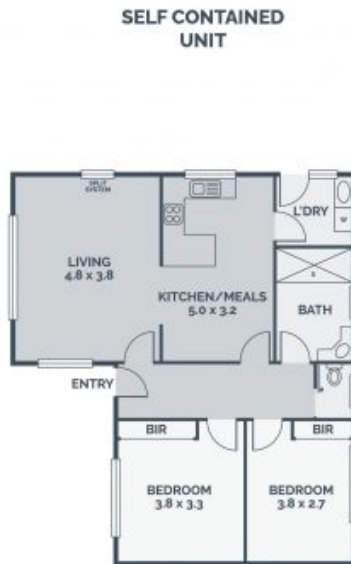
**Price:** SOLD



**Mario Lambiase**  
0430 585 511  
mario.l@lovere.com.au



**Mario Lambiase**  
0430 585 511  
mario.l@lovere.com.au



Every precaution has been taken to establish accuracy of the information in this brochure but does not constitute any representation by the vendor or agent.