



29 Halter Crescent Epping, VIC



A Wonderful Place To Call Home

A wonderful Epping locale, smart style and sophisticated neutral tones are just a handful of attributes that make this contemporary residence the perfect setting for a wide range of buyers looking for a relaxed & carefree lifestyle. Brilliantly positioned, with major arterials, schools, Epping Plaza and Westfield South Morang a short drive away, this great find is one not to be missed! Filled with an abundance of natural light, the lovely interior includes a welcoming entrance foyer that flows into a large living and study area, before accessing an open plan kitchen and dining domain with doors opening out to a delightful grassy yard with pergola. The immaculate kitchen comes equipped with functional appliances and plentiful countertops and storage. Sleeping accommodation includes three spacious bedrooms serviced by two modern bathrooms. Added highlights also include a large laundry, pendant lighting, floating timber floors, window furnishings, split system heating and cooling throughout and a double carport with off-street parking.

Price: SOLD - \$772,000

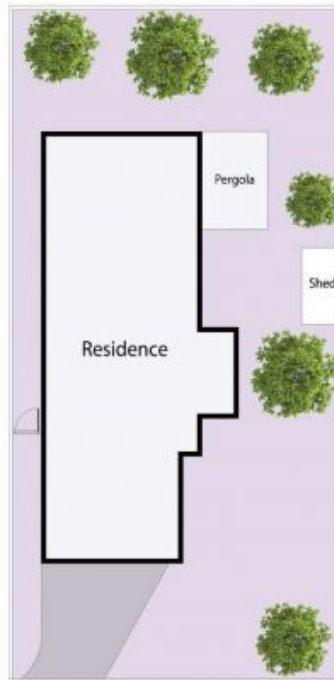
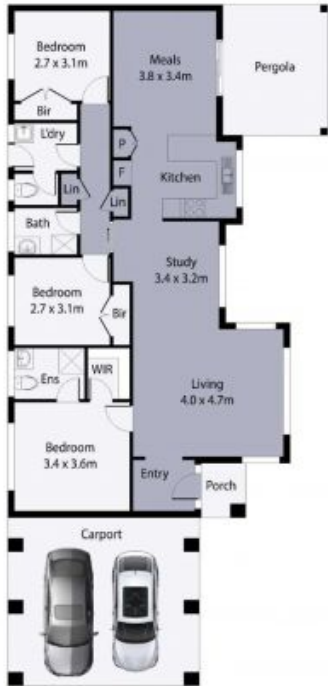


Bijan Rahimi
0451 515 301
bijan.r@lovere.com.au



Jim Kalakias
0402 177 336
jim.k@lovere.com.au

29 Halter Crescent, Epping



Site Plan

THE ABOVE PLAN IS AN ARTIST'S IMPRESSION ONLY. IT INCLUDES ELEMENTS THAT ARE FOR DISPLAY PURPOSES ONLY AND MAY NOT BE TO SCALE. LANDSCAPING SHOWN IS INDICATIVE ONLY. DIMENSIONS ARE APPROXIMATE.

