



6 Persimmon Way Doreen, VIC

 4

 2

 2

Stylish Living in Doreen ? 4-Bedroom Modern Sanctuary!

Conveniently located just a short stroll from Mernda Train Station and Laurimar Town Centre, this established home offers an ideal blend of comfort and convenience. Surrounded by manicured parklands, lakes, and a selection of primary schools and childcare centres, this property is perfect for couples or young families looking for easy, low-maintenance living.

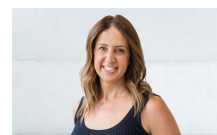
The home features:

- 4 bedrooms, master with a walk-in robe and ensuite
- Well-appointed kitchen/meals with gas stove top, stainless steel appliances, and a dishwasher
- Separate lounge

Price: \$560 Per Week



Toula Lovett



Toula Lovett

lovemillpark@mail.inspectrealest.com.au