



8 The Horizon Epping, VIC



Versatile Family Living On A Grand Scale

Sale by Set Negotiation - Offers close Monday, 28th July at 6:00pm (Unless Sold Prior)

Price: SOLD

Absolutely first-class in every aspect, this contemporary home in a wonderful Epping location is an exceptional family entertainer with large, airy interior spaces. The floor plan features a grand living area before stepping into a well-appointed kitchen and meals area that connects to a grand outdoor alfresco with pergola and deck. Sleeping accommodation includes three spacious bedrooms serviced by two bathrooms and family laundry. Added highlights also include carpets, tiles, split system heating and cooling, window furnishings, and a double garage with internal access. All of this in close proximity to local schools, Epping Plaza, shopping hubs, parklands and amenities.

* Three bedrooms serviced by two stylish bathrooms.



Jim Kalakias

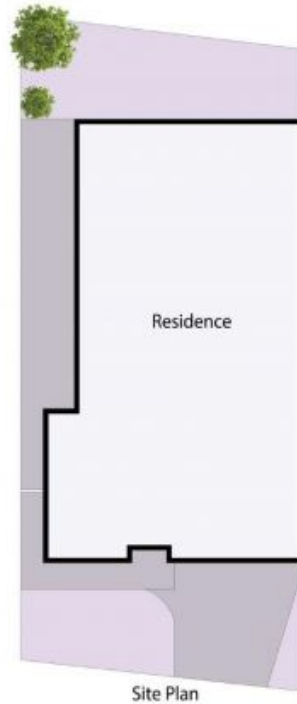
0402 177 336
jim.k@lovere.com.au



Ibbby Zayat

0466 261 130
ibby.z@lovere.com.au

8 The Horizon, Epping



THE ABOVE PLAN IS AN ARTIST'S IMPRESSION ONLY. IT INCLUDES ELEMENTS THAT ARE FOR DISPLAY PURPOSES ONLY AND MAY NOT BE TO SCALE. LANDSCAPING SHOWN IS INDICATIVE ONLY. DIMENSIONS ARE APPROXIMATE.

