

10 Pantheon Street Wollert, VIC



4



2



2

Stylish Sophistication

If you're looking to elevate your level of living, well this modern home in a tranquil Wollert setting could be the perfect proposition. The accommodation offers high quality fixtures and fittings and a floor plan that makes best use of space. The interior showcases an open plan kitchen, dining and living area that branches out to a low maintenance rear yard. Sleeping accommodation includes four spacious bedrooms serviced by two stylish bathrooms and a family laundry. A number of extras also include engineered flooring, heating and cooling, study nook, and remote double garage. Positioned within close proximity to local schools, parklands, public transport, shopping hubs and local amenities.

* Property is tenanted at a rate of \$640 per week with the lease expiring on 18th September 2026.

Due diligence checklist - for home and residential property buyers

Price:

SOLD - \$710,000



Bijan Rahimi

0451 515 301

bijan.r@lovere.com.au

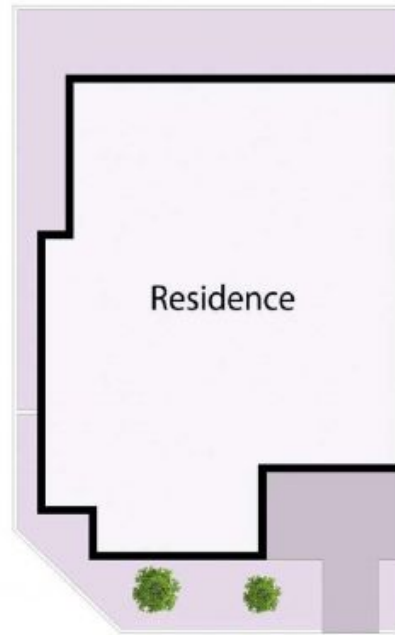
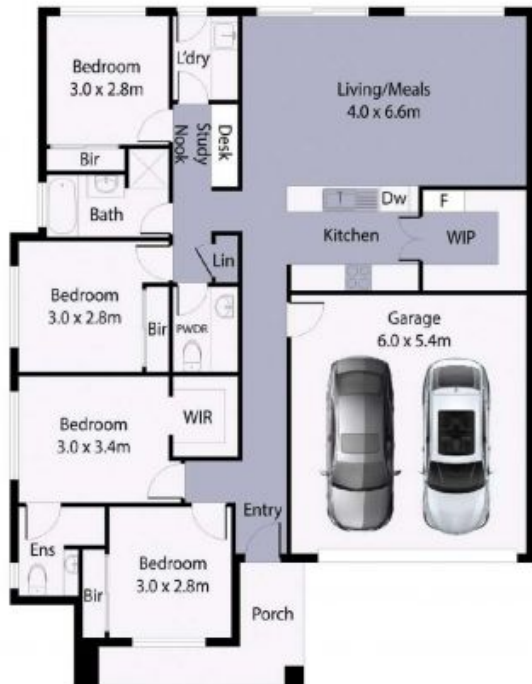


Jim Kalakias

0402 177 336

jim.k@lovere.com.au

10 Pantheon Street, Wollert



Site Plan

THE ABOVE PLAN IS AN ARTIST'S IMPRESSION ONLY. IT INCLUDES ELEMENTS THAT ARE FOR DISPLAY PURPOSES ONLY AND MAY NOT BE TO SCALE. LANDSCAPING SHOWN IS INDICATIVE ONLY. DIMENSIONS ARE APPROXIMATE.

