



34 Numurkah Common Epping, VIC



### Space & Comfort in a Prized convenient Pocket

\* Sale by Negotiation: Offers close Tuesday, 19th August at 2:30pm \*

**Price:** SOLD - \$613,000

Nestled in one of the most convenient locations in the Lyndarum Estate, close to schools, shops and easy access to the city.

Cross the road to Epping North Shopping Centre, take a short stroll to the wide-open spaces offered by various parklands, the kinder and primary school and the bus to take you to the station and Epping Plaza, a few minutes away. It's all right at the door!

Enter through a gallery hallway past the main bedroom with ensuite and walk-in robe and two further bedrooms sharing the family bathroom before opening at the light and bright living meals. Wrapping around a stainless-steel equipped kitchen, it opens to a rear yard, making it perfect for entertaining and minimal maintaining!



**Bijan Rahimi**

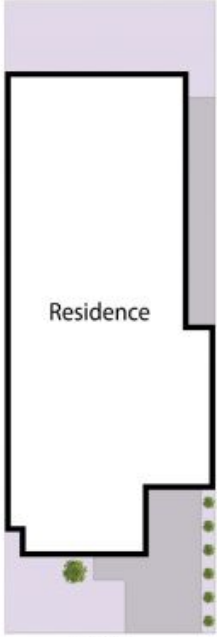
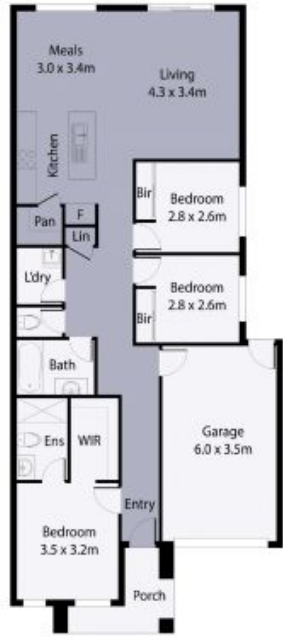
0451 515 301  
bijan.r@lovere.com.au



**Jim Kalakias**

0402 177 336  
jim.k@lovere.com.au

# 4 Numurkah Common, Epping



THE ABOVE PLAN IS AN ARTIST'S IMPRESSION ONLY. IT INCLUDES ELEMENTS THAT ARE FOR DISPLAY PURPOSES ONLY AND MAY NOT BE TO SCALE. LANDSCAPING SHOWN IS INDICATIVE ONLY. DIMENSIONS ARE APPROXIMATE.

