



21 Wotan Drive Epping, VIC



Perfect Start, Smart Investment Or Ideal Downsizer

Positioned in a highly sought-after and ultra-convenient location, this well-presented three-bedroom home offers comfort, practicality, and a lifestyle of ease-ideal for first home buyers, savvy investors, or those looking to downsize without compromise.

Enjoy the benefits of being just moments from both Westfield Plenty Valley and Pacific Epping, as well as excellent transport connections with South Morang and Epping train stations nearby. Reputable primary and secondary schools are also within easy reach, making this a truly family-friendly setting.

Step inside to discover a functional open-plan layout that includes a generous living and meals area, complemented by a well-appointed kitchen. All three bedrooms come complete with built-in robes, while the spacious primary bedroom boasts a walk-in robe and direct access to the central two-way bathroom.

Price: SOLD - \$630,000



Jim Kalakias

0402 177 336
jim.k@lovere.com.au



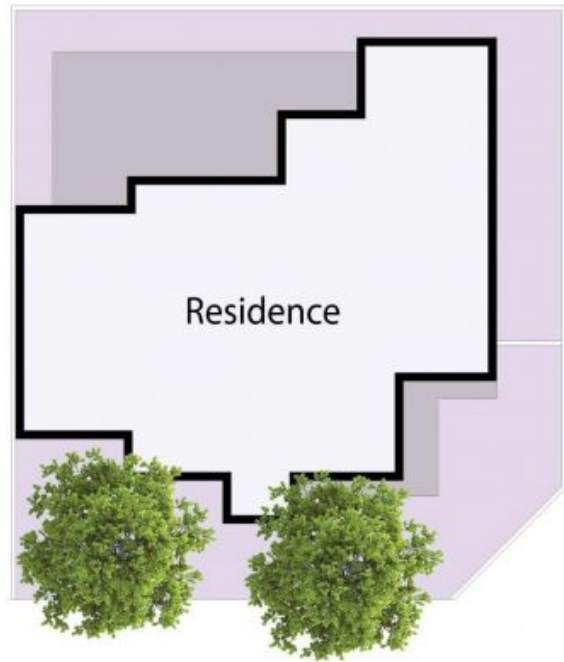
Ibby Zayat

0466 261 130
ibby.z@lovere.com.au

21 Wotan Drive, Epping



Floor Plan



THE ABOVE PLAN IS AN ARTIST'S IMPRESSION ONLY. IT INCLUDES ELEMENTS THAT ARE FOR DISPLAY PURPOSES ONLY AND MAY NOT BE TO SCALE. LANDSCAPING SHOWN IS INDICATIVE ONLY. DIMENSIONS ARE APPROXIMATE.

