



20 Winchester Avenue Epping, VIC



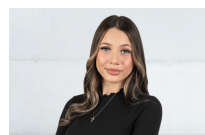
Charming Home in a Prime Location

This well-kept home is full of character and ready to move in. Ideally located opposite parklands and close to schools, it's just a short walk to Greenbrook Shopping Centre and a quick drive to Westfield and South Morang Station. The home features three bedrooms, a spacious lounge and dining area, and a kitchen with adjoining meals space.

Highlights:

- ? Ducted heating and cooling
- ? Dishwasher
- ? Enclosed carport with dual roller doors, plus shed and extra parking
- ? Spotless retro-style bathroom
- ? Across from parklands, pre-school, and health centre

Price: \$500 per week



Alicena Vocale

loveepping@mail.inspectrealestat