



24 Heritage Drive Mill Park, VIC

3 1 2

Smart Investment of Future Family Home

Set in a highly sought pocket of Mill Park, 24 Heritage Drive presents an outstanding opportunity for savvy investors or future owner-occupiers looking to secure a well-positioned and comfortable home with strong rental appeal.

Currently leased at \$510 per week, this well-maintained property offers immediate returns with excellent tenants already in place, making it an ideal turn-key investment in a location known for consistent growth and strong demand.

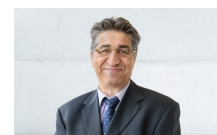
Positioned on a generous block in a family-friendly neighbourhood, the home offers a practical floorplan with comfortable living zones and a spacious backyard.

Key features include:

Price: AUCTION THIS SATURDAY \$645,000 - \$709,500

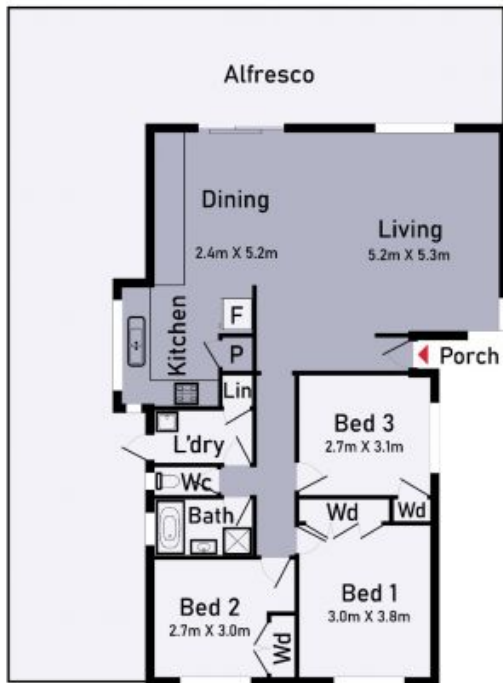
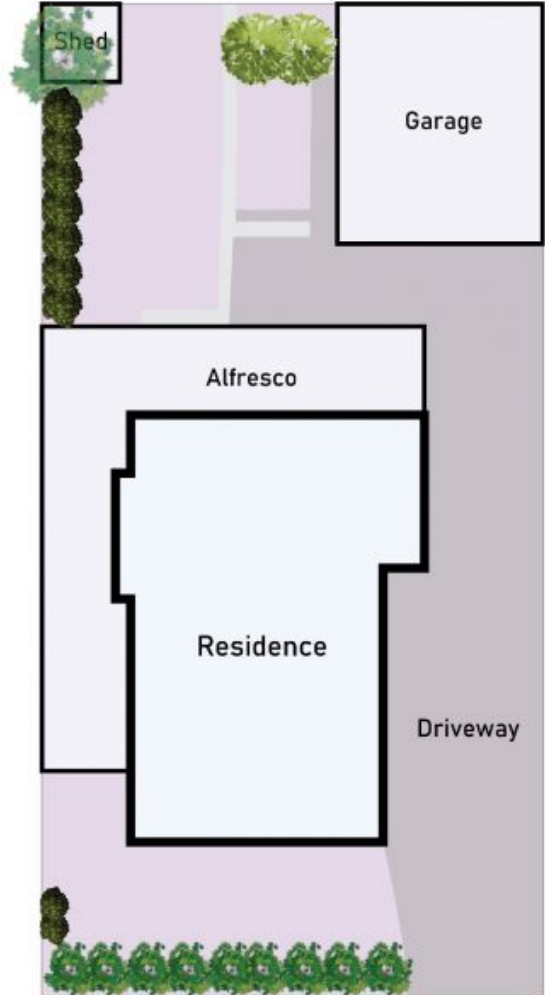
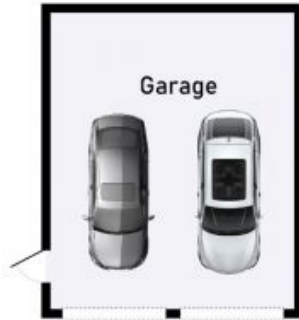


John Gioftsidis
0410 522 195
john.g@lovere.com.au



Jim Vasiliou
0418 123 054
jim.v@lovere.com.au

Shed



24 Heritage Drive, Mill Park

* Dimensions are approximate and for illustrative purposes only



24 Heritage Drive

Mill Park, VIC