



6/148 Hickford Street Reservoir, VIC



### Private, Proportioned And Perfectly Positioned

Private, proportioned and perfectly positioned, this two-bedroom home delivers an exceptional opportunity for first home buyers, young families, resizers and investors seeking easy, low maintenance living. Two bedrooms sharing the family bathroom deliver spacious accommodation options perfectly complementing the open-plan living wrapping around a contemporary kitchen that offers stainless steel appliances, on-trend finishes and a large breakfast island. Glass sliders ensure a seamless transition to a paved entertainment area in the easy-care rear yard. Ready to live in or let out, this is a must see!

- \* Robes to both bedrooms
- \* Concealed laundry
- \* Timber floors in the living area
- \* Multiple split system units
- \* Short stroll to Ruthven Station, Donath Reserve

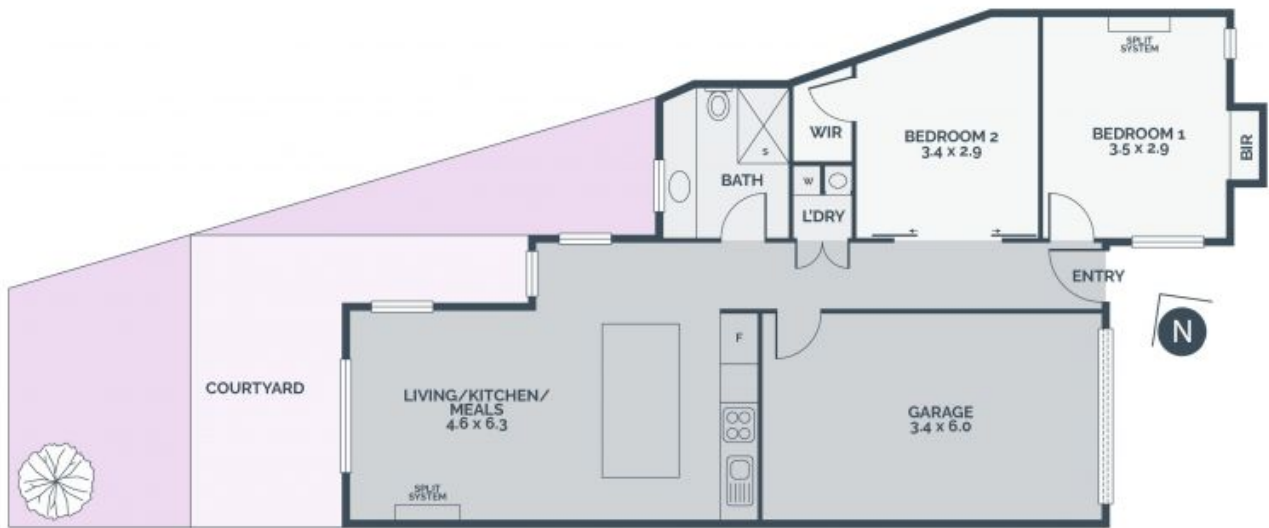
**Price:** SOLD - \$534,500



**Kannan Subramanian**

0411 711 232  
kannan.s@lovere.com.au

0411 711 232  
kannan.s@lovere.com.au



Every precaution has been taken to establish accuracy of the information in this brochure but does not constitute any representation by the vendor or agent.

**LOVE & CO**

**6/148 Hickford Street**

**Reservoir, VIC**