



8 Solway Court Epping, VIC

 3

 1

Nestled In Comfort

Ideally located in a highly sought-after pocket, this charming three-bedroom residence offers the perfect blend of comfort, functionality, and convenience. Thoughtfully designed and well-maintained, it presents a fantastic opportunity for first-home buyers, young families, or astute investors.

Step inside to a light-filled interior featuring three spacious bedrooms, each designed for everyday comfort and practicality. A split system ensures year-round climate control, keeping you comfortable in every season. The home also features a central bathroom, a well-appointed kitchen with generous storage, and a welcoming living area ideal for relaxing or entertaining.

Outside, a low-maintenance backyard is complemented by a covered pergola-perfect for alfresco dining, weekend barbecues, or simply enjoying a quiet moment outdoors.

Price: SOLD - \$726,000



Jim Kalakias

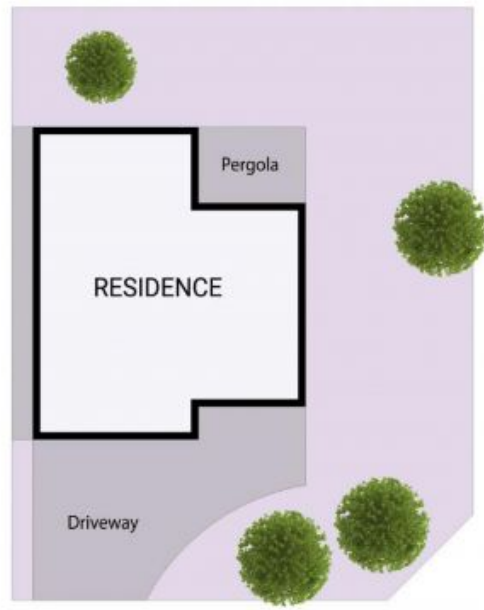
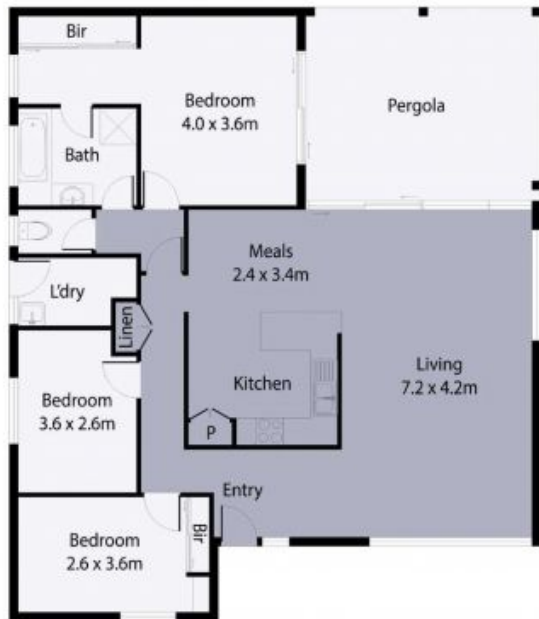
0402 177 336
jim.k@lovere.com.au



Ibbby Zayat

0466 261 130
ibby.z@lovere.com.au

8 Solway Court, Epping



Site Plan

THE ABOVE PLAN IS AN ARTIST'S IMPRESSION ONLY. IT INCLUDES ELEMENTS THAT ARE FOR DISPLAY PURPOSES ONLY AND MAY NOT BE TO SCALE. LANDSCAPING SHOWN IS INDICATIVE ONLY. DIMENSIONS ARE APPROXIMATE.

