



89 Roycroft Avenue Mill Park, VIC

3

1

2

### Beautifully Presented Family Home With Stylish Interiors And Space

The ideal opportunity for those looking to nest or invest, this neat and tidy home boasts fantastic street appeal and enjoys a perfect position within easy reach of every Mill Park amenity. Opposite Findon Primary and footsteps to parklands, the bus stop and the local shop, it is an easy walk from The Stables and just minutes from RMIT, DFO and the tram. Free-flowing living areas, three generous bedrooms, and an expansive alfresco deliver a combination of liveability, desirability and affordability that is hard to pass up!

- \* Large alfresco space, covered for year-round enjoyment
- \* Oversize garage with workshop space. Shed
- \* Ducted heating supplemented by an A/C unit and ceiling fans
- \* Securely gated rear yard
- \* Day-night blinds. Alarm

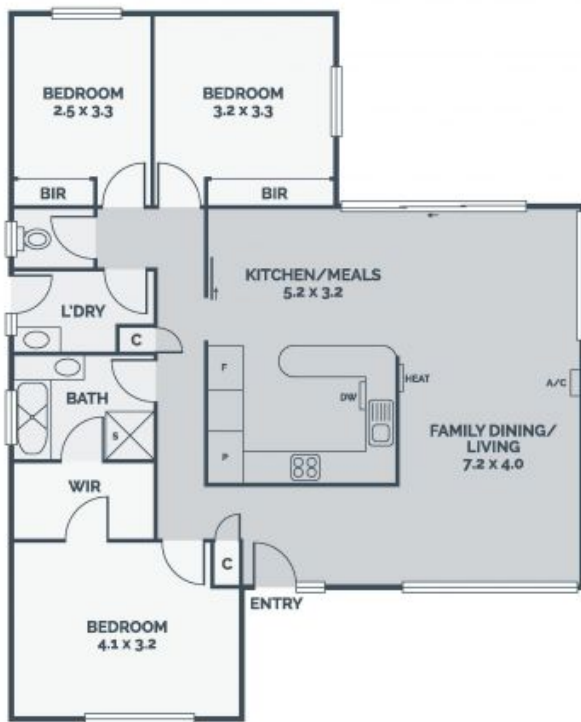
**Price:** SOLD - \$710,000



**George Stathopoulos** **George Stathopoulos**

0403 053 836  
george.s@lovere.com.au

0403 053 836  
george.s@lovere.com.au



Every precaution has been taken to establish accuracy of the information in this brochure but does not constitute any representation by the vendor or agent.