



28 Zinnober Gardens Epping, VIC



3



2

Design & Style, Welcome Home!

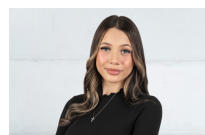
This renovated sleek and modern home is ideally located opposite parklands, with easy access to shops, schools, and bus stops.

Designed for a low-maintenance lifestyle, it features an open-plan living area, a kitchen equipped with high-quality stainless-steel appliances, including a dishwasher, and Caesarstone benchtops.

The master bedroom boasts a walk-in robe and ensuite, while two additional bedrooms also include walk-in robes.

The home also offers a central bathroom and a separate laundry. Additional highlights include ducted heating, split system cooling, ceiling fans, and a low-maintenance courtyard with an alfresco area.

Price: \$490 per week



Alicena Vocale

loveepping@mail.inspectrealestat