



20 Winchester Avenue Epping, VIC

3

1

1

Remarkable Retro Spaces In A Perfect Position

Uncover the full potential of this original but far-from-ordinary home! Primed for immediate enjoyment, it provides the perfect blank canvas to introduce contemporary updates as time and budget allow or take advantage of the proportions and position with a state-of-the-art, show-stopping renovation.

Opposite parklands, close to schools and a short walk to Greenbrook Shopping Centre, the currently comfortable layout of three bedrooms, large lounge-dining and meals overlooked by the kitchen will meet your needs for today and your dreams for tomorrow.

- * Ducted heating and cooling
- * Westfield and South Morang station within a short drive
- * Enclosed carport with dual roller door access. Shed. Extra driveway parking
- * Opposite parklands, pre-school and maternal health centre

Price: SOLD - \$650,000



Jim Kalakias

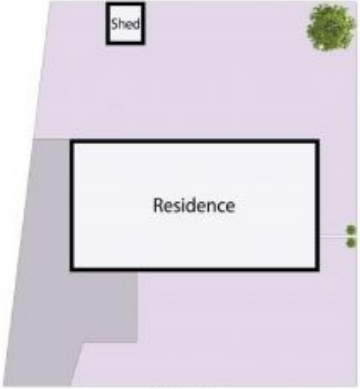
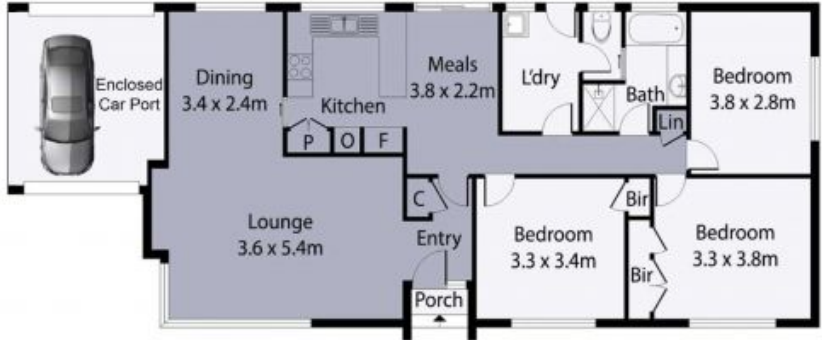
0402 177 336
jim.k@lovere.com.au



Bijan Rahimi

0451 515 301
bijan.r@lovere.com.au

20 Winchester Drive, Epping



Site Plan

THE ABOVE PLAN IS AN ARTIST'S IMPRESSION ONLY. IT INCLUDES ELEMENTS THAT ARE FOR DISPLAY PURPOSES ONLY AND MAY NOT BE TO SCALE. LANDSCAPING SHOWN IS INDICATIVE ONLY. DIMENSIONS ARE APPROXIMATE.

