



3 Reflection Walk Epping, VIC



4



2



2

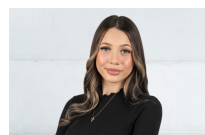
MODERN HOME, CONVENIENT LOCATION

Ideally set in the Aurora Estate within minutes of local shops & adjacent to parkland, this beautifully presented townhouse & its location are sure to impress. A short drive from Pacific Epping, Epping train station, local bus stops, schools & much more.

Comprising;

- Four bedrooms
- Master with full ensuite & walk-in robe
- Built-in robes to remaining bedrooms
- Kitchen with stone benches, stainless steel appliances & walk-in pantry
- 900mm oven with 5 burner stove top & range hood
- Adjoining meals/living area
- Spacious open plan formal lounge
- Polished timber floors & tiles throughout
- Alarm system

Price: \$620 per week



Alicena Vocale

loveepping@mail.inspectrealestat