



10 Skehan Place Epping, VIC



Spacious Family Excellence

Built with a commitment to quality, this elevated splendor has been designed with modern family appeal in mind. Central to this attractive home is the chef's kitchen featuring ample bench space and storage. The expansive open-plan meals area and family/rumpus room opens widely onto a covered entertainer's alfresco embracing the full versatility of indoor-outdoor living. Spacious proportions feature through the entire home which also offers formal lounge, home office/study, and four bedrooms including master with en suite and walk-in robe. Other luxuries include ducted heating, evaporative cooling, ducted vacuum and double garage. In a superb neighborhood, appreciate living amidst other quality homes with shops, schools, transport and parks close by.

Due diligence checklist - for home and residential property buyers - <http://www.consumer.vic.gov.au/duediligencechecklist>

Price: Contact Agent

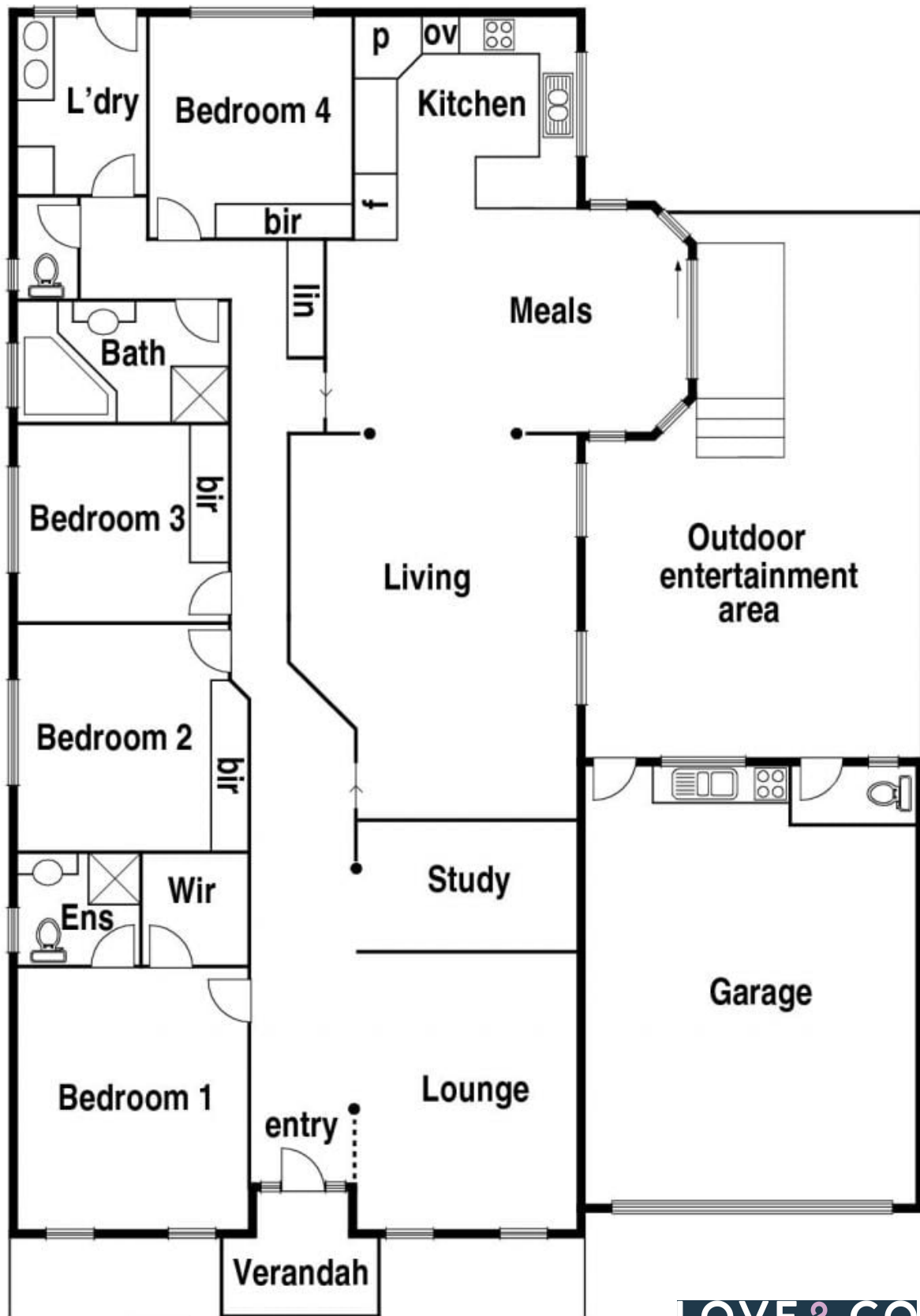


Jim Kalakias
0402 177 336
jim.k@lovere.com.au



Jim Kalakias
0402 177 336
jim.k@lovere.com.au

10 Skehan Pl. Epping



LOVE & CO