



63 Peppercorn Parade Epping, VIC



3



1



2

## Comfortable Living That's Close To Everything

This brick home on a generous allotment offers a fabulous start for first home buyers! Opposite Greenbrook Primary, around the corner from the kinder and the lifestyle benefits of Lowalde Park and within easy reach of Greenbrook Village, St Monica's, the station and the bus, it delivers affordable comfort and convenience. With three bedrooms served by the family bathroom, gas heated and air-conditioned living/dining sweeping into the kitchen and family bathroom with separate toilet, it offers huge scope to improve over time, with the possibility to extend if desired (STCA). With an expansive paved outdoor area, large garage, gated kid friendly rear yard and carport, it will excite with its potential and entice with its position.



**Jim Kalakias**

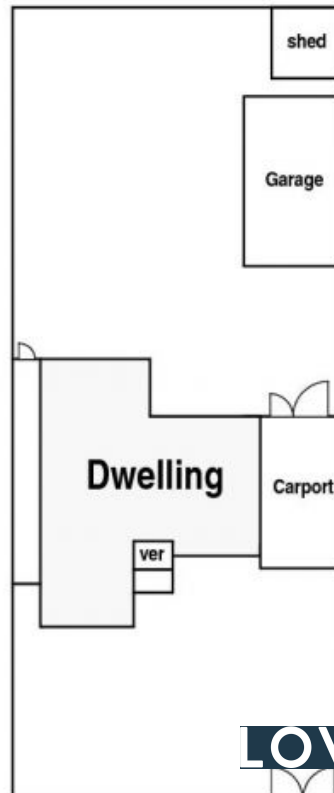
0402 177 336

jim.k@lovere.com.au

# 63 Peppercorn Pde. Epping



## Site Plan



LOVE & CO