



42A Carbon Crescent Mill Park, VIC

 3  1  3

ENTER THE MARKET

Only minutes from Northern Hospital, Epping Fair Shopping Centre, Epping Train Station and Western Ring Rd access not too far as well, is this very affordable 3 bedroom, double garage street facing unit with no body corporate.

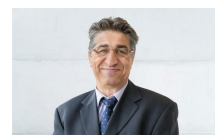
A good opportunity for first home buyers and investors to enter the market and secure a solid home in a more than handy location.

Price: AUCTION THIS SATURDAY! \$550,000 - \$590,000



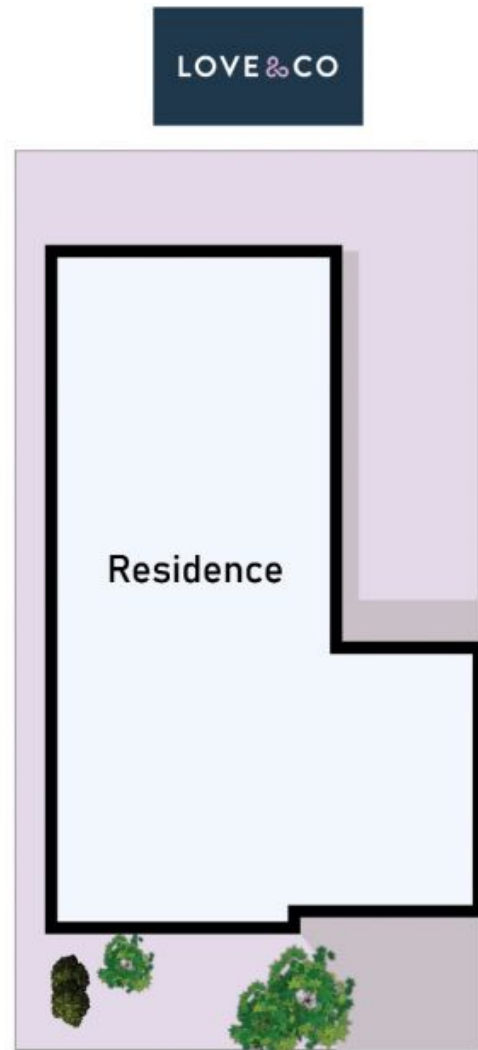
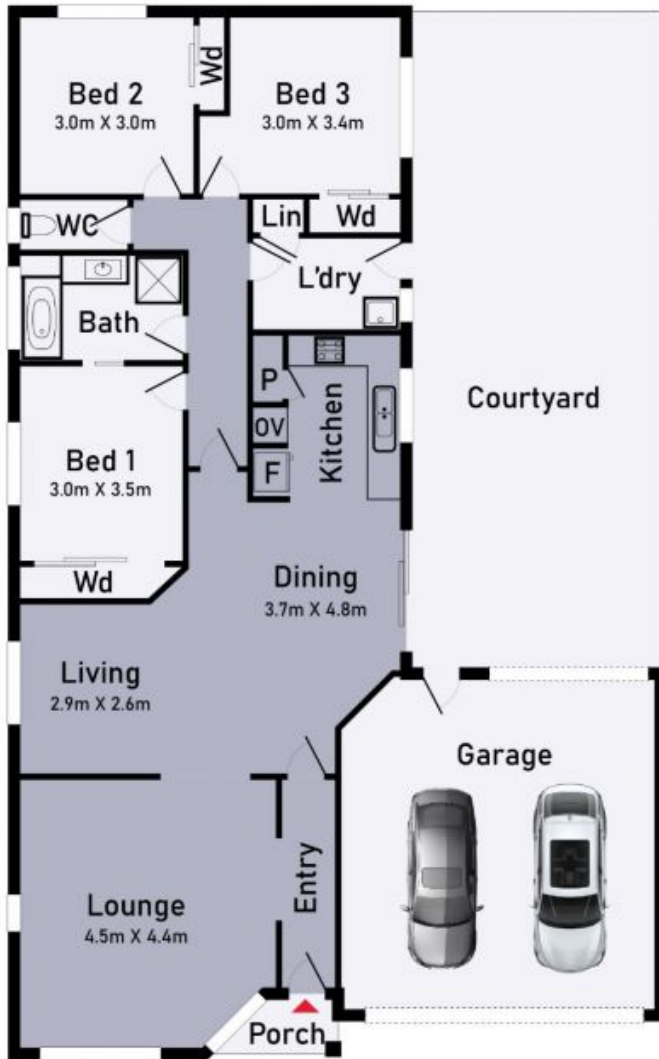
John Gioftsidis

0410 522 195
john.g@lovere.com.au



Jim Vasiliou

0418 123 054
jim.v@lovere.com.au



42A Carbon Cres, Mill Park

* Dimensions are approximate and for illustrative purposes only



LOVE & CO

42A Carbon Crescent

Mill Park, VIC