



6 Woolnough Drive Mill Park, VIC



**Great Living in a Great Location!**

With its own street frontage, this 2 Bedroom residence is big in every aspect, with an instant warmth and charm.

**Price:** \$520 Per Week

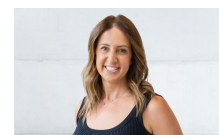
Comprises:

- Formal lounge
- Very spacious open plan kitchen with excellent meals/family area
- 2 well-sized bedrooms with BIR
- Lock Up remote garage
- Ducted heating & split-system air-conditioning
- Low maintenance yard
- Solar

LOVE & CO NO.1 FOR PROPERTY MANAGEMENT

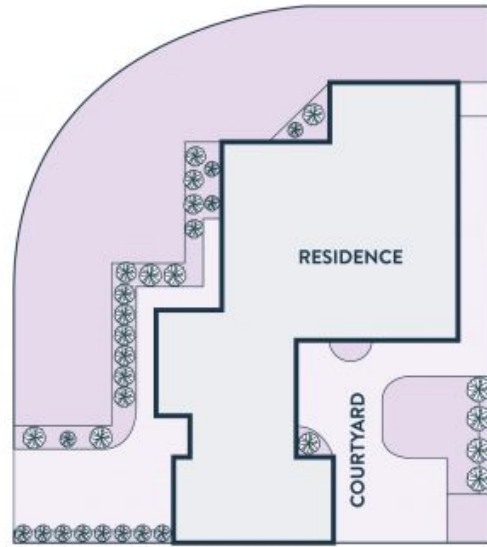
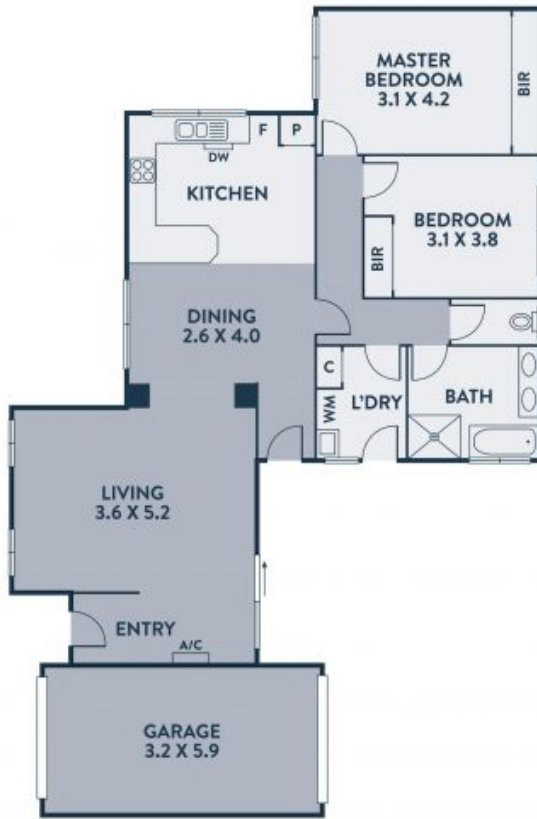


**Toula Lovett**



**Toula Lovett**

lovemillpark@mail.inspectrealest.com.au | lovemillpark@mail.inspectrealest.com.au



Every precaution has been taken to establish accuracy of the information in this brochure but does not constitute any representation by the vendor or agent.



6 Woolnough Drive

Mill Park, VIC

**LOVE & CO**