

Under Application

Love&Co Mill Park



10 Clarence Way Taylors Hill, VIC



4



2



2

Spacious 4-Bedroom Family Home!

Located in a highly sought-after area, this spacious home offers everything a family could need. With a large low-maintenance backyard perfect for outdoor activities and a separate lounge room, there's plenty of space to relax and entertain.

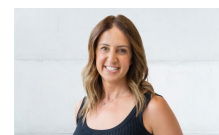
Comprising:

- 4 bedrooms
- 2 bathrooms
- Separate lounge room for added comfort and privacy
- Modern kitchen with ample storage and a convenient layout
- Ducted heating and split system for year-round comfort
- Double garage
- Large, low-maintenance backyard

Price: \$620 Per Week



Toula Lovett



Toula Lovett

lovemillpark@mail.inspectrealest.com.au lovemillpark@mail.inspectrealest.com.au