



10 Coulstock Street Epping, VIC



In The Heart Of All The Action

Once you close the door behind you, a world of convenience opens up before you. Within moments, you can find yourself shopping and dining along the buzzing local High Street strip or at Pacific Epping (Epping Plaza) Shopping Centre, while living within easy walking distance of Epping train station and local bus services means you can keep your car securely parked in the single garage and commute around town via public transport instead! Factor in walking distance access to St Peter's Primary School, Epping Primary School, St Monica's College, Melbourne Polytechnic and the Darebin Creek Trail and the close proximity of the Hume Freeway/Metropolitan Ring Road, Costco and the Northern Hospital and every lifestyle need is comfortably catered for here.

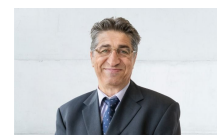
Once you arrive back home, enjoy the comfort and style of this immediately enjoyable abode, which enjoys the added benefit of no owners corporation, no common land and a well maintained interior.

Price: Sold \$525,000



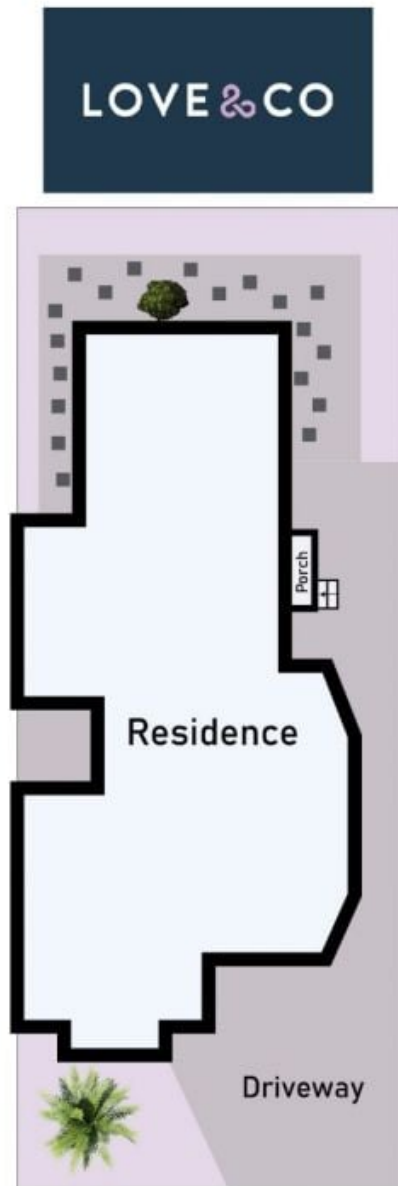
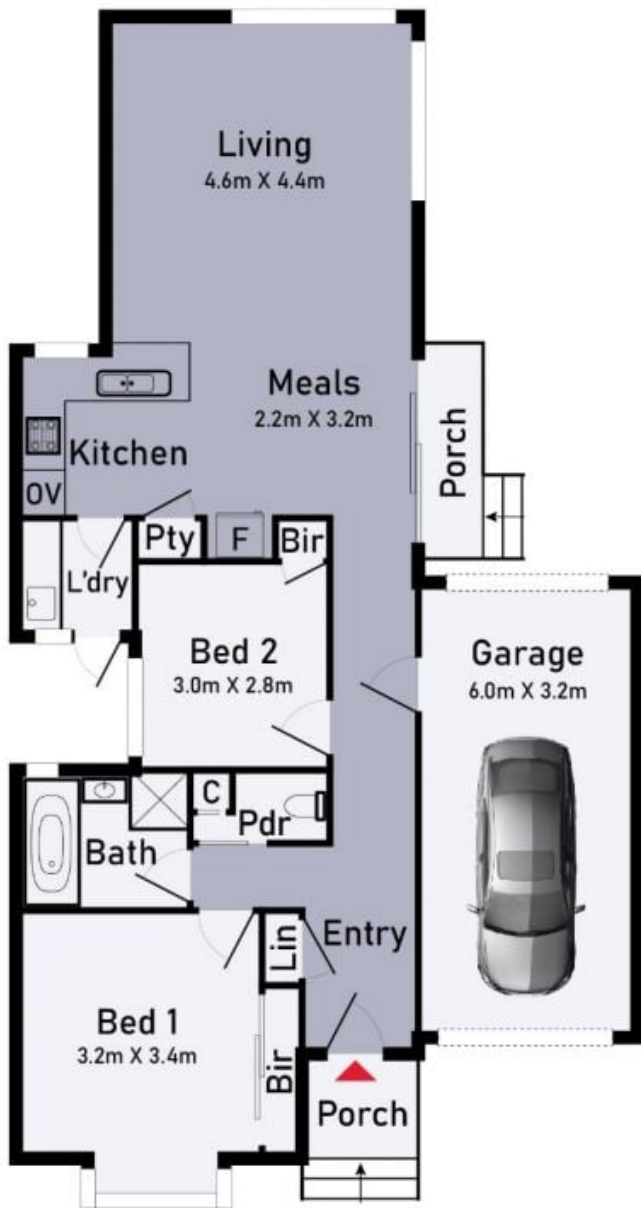
John Gioftsidis

0410 522 195
john.g@lovere.com.au



Jim Vasiliou

0418 123 054
jim.v@lovere.com.au



10 Coulstock Street, Epping

* Dimensions are approximate and for illustrative purposes only



LOVE & CO

10 Coulstock Street

Epping, VIC