



89 Blossom Park Drive Mill Park, VIC



4



2



2

Timeless Elegance & Refined Living in Prestigious Blossom Park

For families in search of a quality-built, spacious, flexible, and beautifully stylish retreat in an enviable location, look no further than this grand 4 bedroom + study double storey stunner.

On an expansive 870 sqm (approx.) block and taking up a prominent, elevated position on prestigious Blossom Park Drive, this residence makes a fantastic first impression with its grand entrance, paved driveway and gorgeously landscaped front garden. The beautifully enclosed semi-circular entry sets the tone for the rest of the home, while classical elements throughout the interior such as marble tiles, parquetry and timber floors, ornate ceilings, quality drapes and granite surfaces combining to provide a timeless elegance.

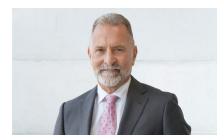
The formal living room and dining room oozes with old-world charm and is an ideal space for relaxing.

Price: \$1,250,000 - \$1,375,000



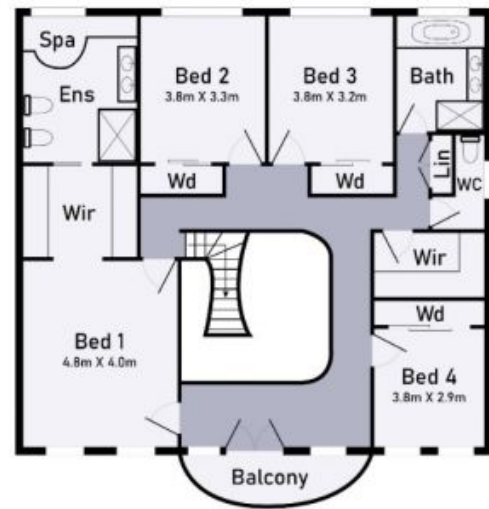
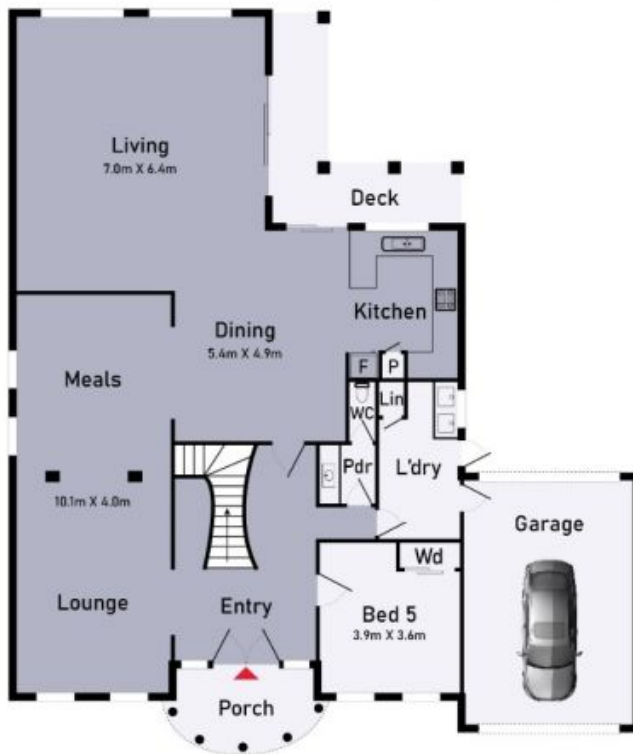
John Gioftsidis

0410 522 195
john.g@lovere.com.au



Roger Pettinella

0418 588 419
roger.p@lovere.com.au



89 Blossom Park Drive, Mill Park

* Dimensions are approximate and for illustrative purposes only



89 Blossom Park Drive

Mill Park, VIC