



1/351 Findon Road Epping, VIC



BRIGHT, CHEERFUL, STYLISH SPACES

Sure to delight young families or couples, featuring a large open plan living, integrating a stainless steel equipped kitchen and sliding doors roll back to deliver seamless access to a low maintenance private yard.

Price: \$530 per week

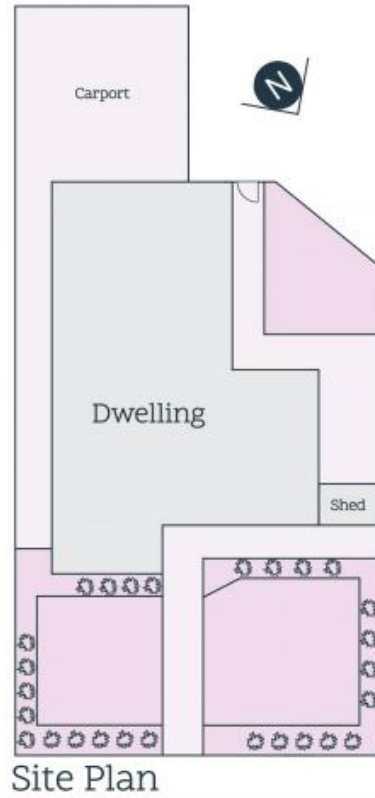
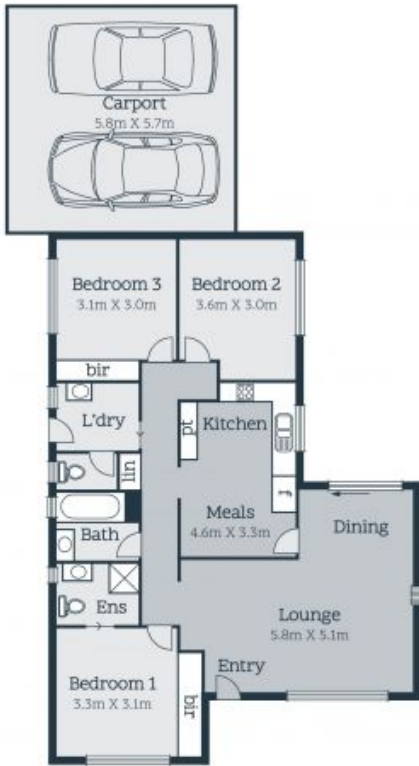
Featuring:

- Three bedrooms
- Master with ensuite
- Built in robes to 1st and 2nd bedrooms
- Ducted heating throughout
- Split system unit
- Shed
- Roller blinds
- Double carport



Surendra Subedi

loveepping@mail.inspectrealestat



Every precaution has been taken to establish accuracy of the information in this brochure but does not constitute any representation by the vendor or agent