



12A Christie Avenue Mill Park, VIC



A Benchmark In Contemporary Living

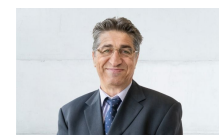
High-end finishes & inspired design combine with on-trend fixtures, top-shelf inclusions and heavenly natural light accenting the entire home to offer the ultimate in an enviable, low maintenance lifestyle. A breathtaking stone kitchen with walk-in pantry takes centre stage and offers an equal measure of aesthetic appeal, abundant storage/bench space and functionality. The sun drenched open plan living and dining zone overlooks a low maintenance rear yard and expansive undercover alfresco to create a fabulous indoor-outdoor flow. Three generous bedrooms include a main bedroom with luxe ensuite and walk-in robe with an equally-well-appointed stunning central bathroom and fully fitted laundry completing the layout of this refined home. Every detail has been considered including double-glazed windows, ducted heating, split system heating/air conditioning and a remote garage with internal access. Perfectly positioned, this inspired home is set amongst all of Mill Park's key amenities and the lush surrounds of Redleap Reserve with all the lively action of The Stables Shopping Centre, Westfield and convenience of South Morang station close by.

Price: Sold \$795,000



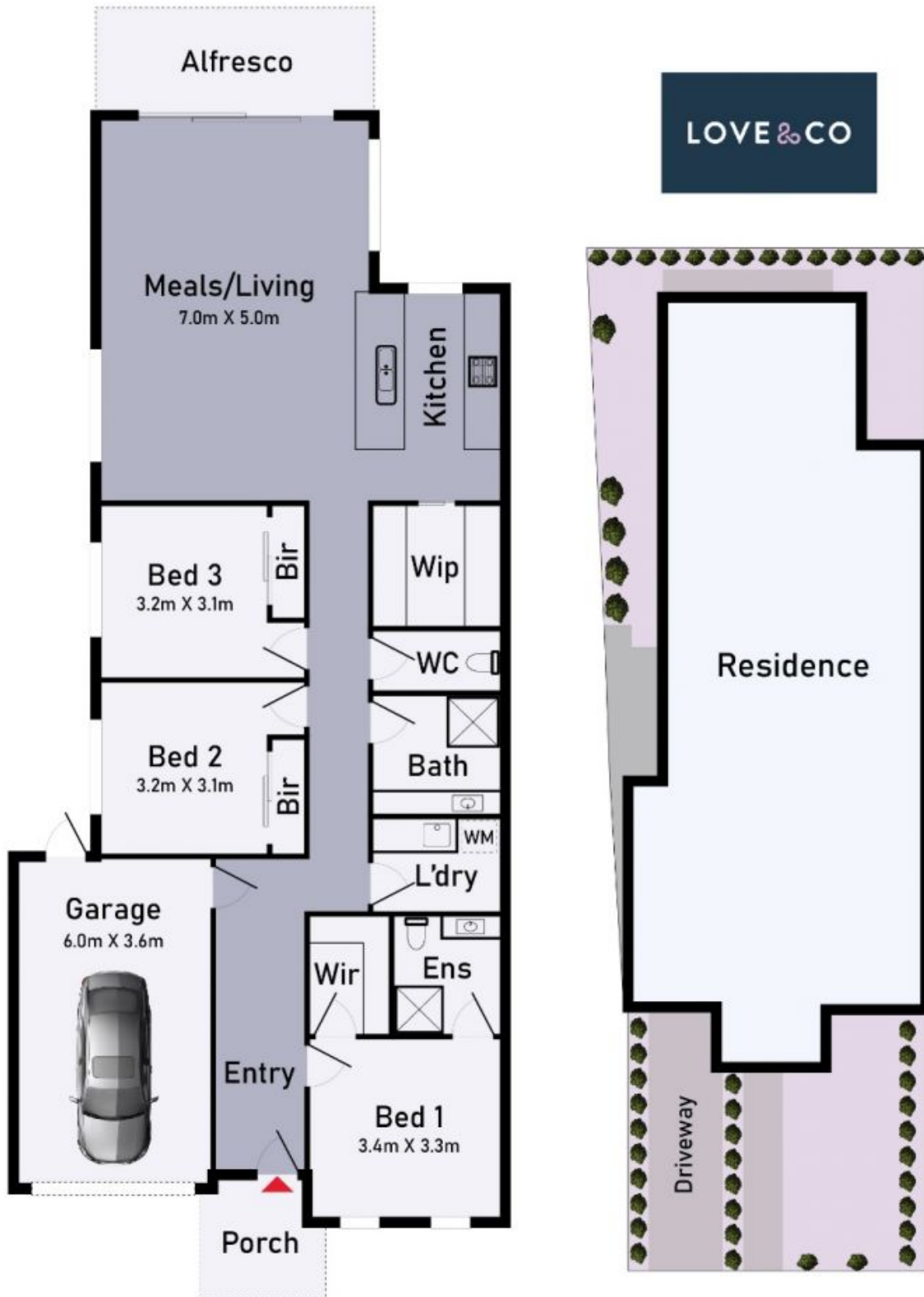
John Gioftsdis

0410 522 195
john.g@lovere.com.au



Jim Vasiliou

0418 123 054
jim.v@lovere.com.au



12A Christie Avenue, Mill Park



* Dimensions are approximate and for illustrative purposes only

12A Christie Avenue

Mill Park, VIC

