



3/55 Davison Street Epping, VIC

 1
  1
  1

Live, Invest, Relax: Contemporary Unit in Epping's Heart!

Welcome to your new sanctuary! This stylish one-bedroom unit offers contemporary living in a prime location, just a short stroll from Epping Train Station. Enjoy easy access to St. Peter's Primary School, St. Monica's College Secondary School, and Pacific Epping, making life incredibly convenient.

With a tiled kitchen area featuring stainless steel cooking appliances and a dishwasher, this unit seamlessly flows into the adjoining open-plan meals and living zones. The spacious carpeted bedroom includes built-in robes for ample storage, while split system heating and cooling ensures year-round comfort.

Due diligence checklist - for home and residential property buyers

Price: \$335,000 - \$365,000



Jim Kalakias

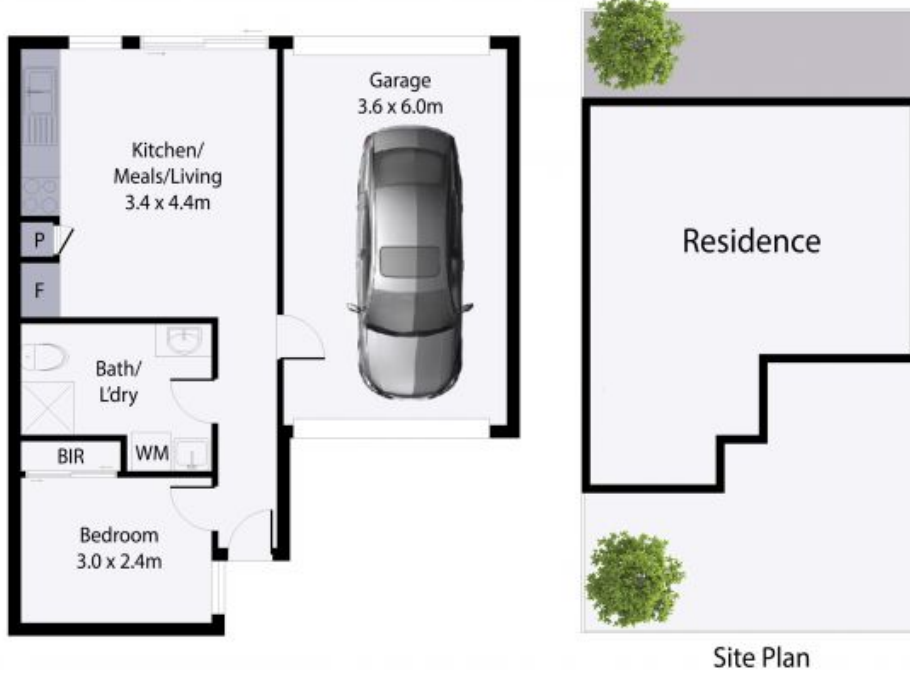
0402 177 336
jim.k@lovere.com.au



Ibby Zayat

0466 261 130
ibby.z@lovere.com.au

3/55 Davisson Street, Epping



THE ABOVE PLAN IS AN ARTIST'S IMPRESSION ONLY, IT INCLUDES ELEMENTS THAT ARE FOR DISPLAY PURPOSES ONLY AND MAY NOT BE TO SCALE. LANDSCAPING SHOWN IS INDICATIVE ONLY. DIMENSIONS ARE APPROXIMATE.

