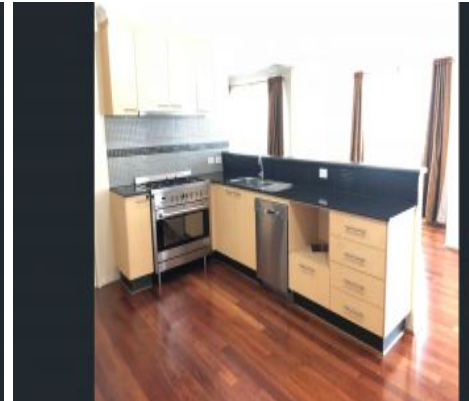


Under Application

Love&Co Mill Park



8 Clarence Way South Morang, VIC



6 MONTH LEASE! LOVELY FAMILY HOME!!

Ideally situated, in a quiet and family friendly pocket just off Gordons Road!

Price: \$530 Per Week

Comprising:

- 4 Bedrooms
- Master with ensuite and walk in robe
- Stainless steel appliances
- Separate Lounge
- Ducted heating and evaporative cooling.
- Gas boosted solar water heating.
- Solar electricity.
- Security alarm.
- Double garage with internal access.
- Garden shed.
- Low maintenance garden.



Vanessa Ottina



Vanessa Ottina

lovemillpark@mail.inspectrealest.com.au lovemillpark@mail.inspectrealest.com.au