



30 Windermere Parade Doreen, VIC



3



2



2

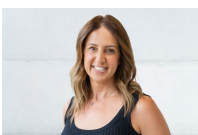
Perfect Family Home!

Your next family home awaits! This beautifully designed home that showcases light filled zones. Located in a very popular pocket in Doreen, the home takes full advantage of its internal and external spaces.

Comprises of three bedrooms, master complimented with ensuite and walk in robe, whilst the remaining two bedrooms are serviced with built in robes and central bathroom inclusive of bathtub.

Additional features include:

- Formal living and dining
- Stainless steel appliances
- Plenty of storage space
- Outdoor alfresco
- Low maintenance gardens



Toula Lovett

lovemillpark@mail.inspectrealest

Price: \$530 Per Week