

7 Clunes Place Epping, VIC



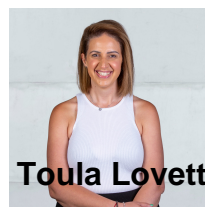
Lovely Three Bedroom Family Home!

A three bedroom family home set in a quiet family friendly court location that is conveniently within close proximity to local shops, schools, parklands & transport. The property features a comfortable floor plan that comprises of good sized bedrooms, central bathroom, large living and dining area and light filled kitchen that leads out to a great size backyard. Bonuses include ducted heating and split system air-con to lounge.

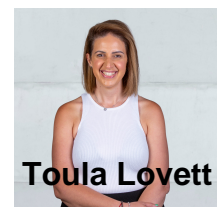
INSPECTIONS MAY BE CANCELLED UP TO 24 HOURS PRIOR WITHOUT NOTICE. YOU MUST REGISTER TO VIEW THIS PROPERTY AT AN OPEN FOR INSPECTION AND TO BE NOTIFIED OF ANY CHANGES OR CANCELLATIONS

LOVE & CO NO.1 FOR PROPERTY MANAGEMENT

Price: \$460 Per Week



Toulou Lovett



Toulou Lovett

lovesmillpark@mail.inspectrealest lovesmillpark@mail.inspectrealest