



22a Moorhead Drive Mill Park, VIC

3 2 1

WALK TO EVERYTHING - UNDER OFFER

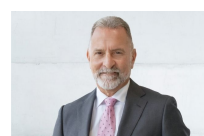
Price: Sold \$645,000

Boasting house-like proportions, and in the most convenient of locations, this single-level home delivers an outstanding opportunity for 1st home buyers, Investors and downsizers alike?

Sun-filled interior spaces include a spacious formal lounge with bonus internal/external atrium-like sitting area, 3 excellent bedrooms (Mast: ENS/WIR), a spacious bright kitchen with ample cupboard spaces overlooking the huge meals area and a fantastic 2nd family area as well.

Add to all this, a child-friendly spacious rear yard with a sundrenched BBQ area, high ceilings, ducted heating, some near new colorbond fencing and more.

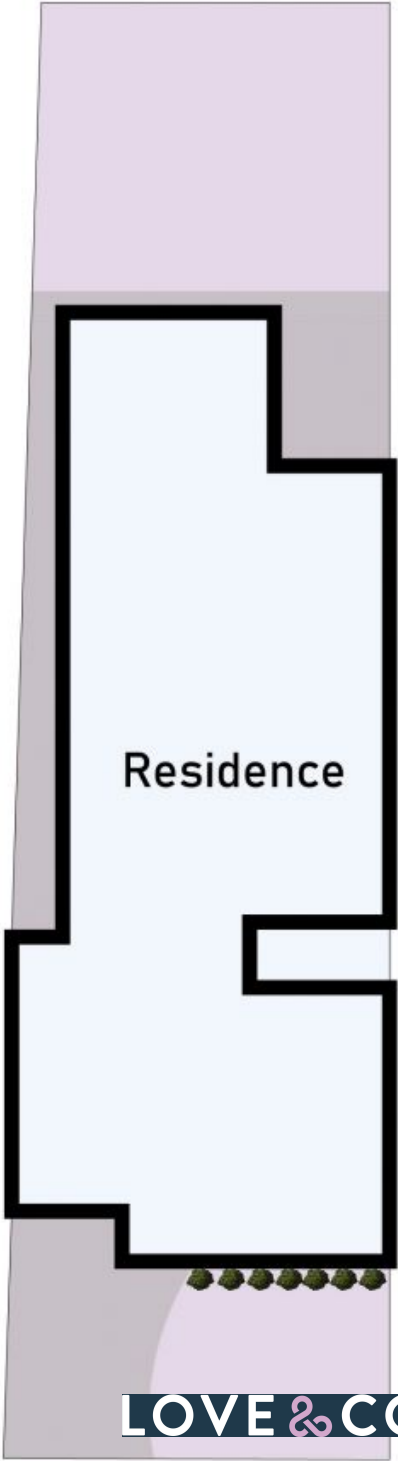
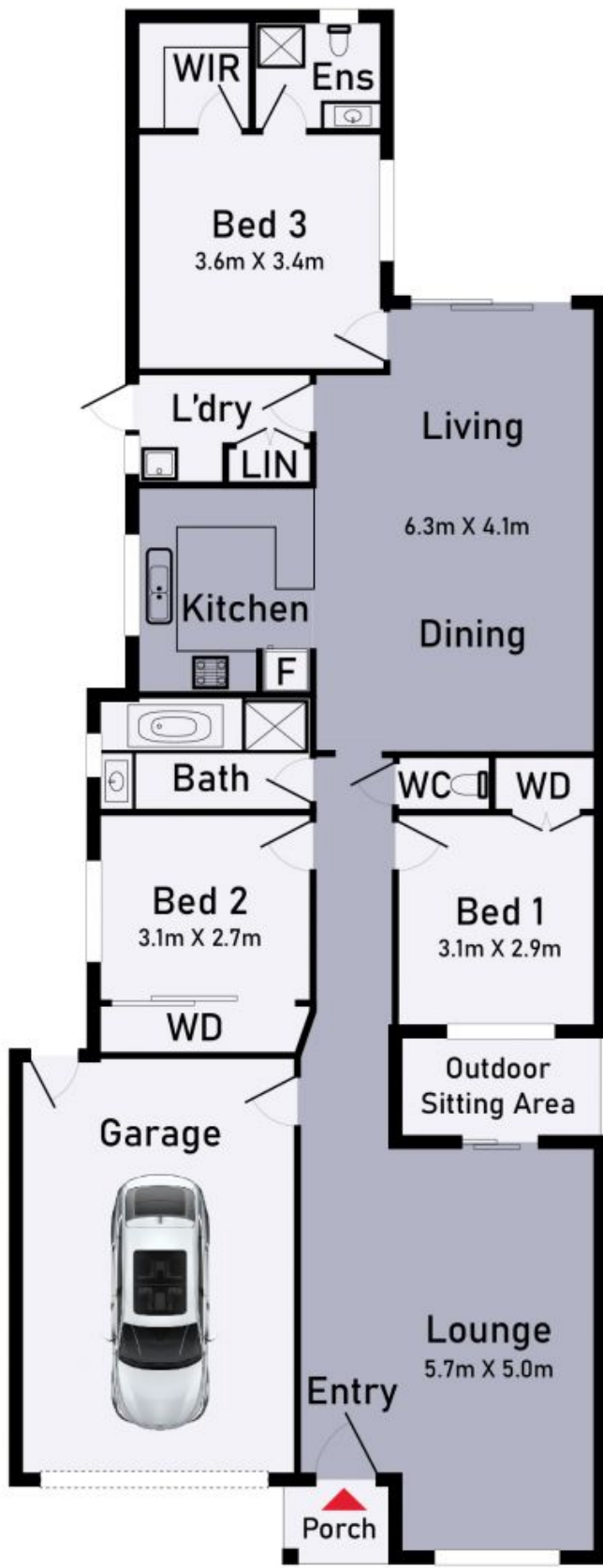
With the Stables Shopping Centre, Mill Park Secondary College, St Francis Primary School, Redleap Lake, Mill Park Leisure Centre and Westfield Plenty Valley literally just footsteps away, you'll be hard-pressed finding a better, more convenient location??. Hard to fault/Easy to buy



Roger Pettinella
0418 588 419
roger.p@lovere.com.au



John Gioftsdis
0410 522 195
john.g@lovere.com.au



22a Moorhead Drive

Mill Park, VIC

2/22 Moorhead Drive Mill Park

* Dimensions are approximate and for illustrative purposes only