

312/627 Victoria Street Abbotsford, VIC



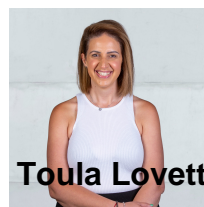
Superior as New Apartment

With Victoria Gardens Shopping Centre opposite, Bridge Road/Swan Street eateries and boutiques close by, tram on your doorstep to the CBD in 15/20 minutes, this apartment is the ultimate lifestyle choice.

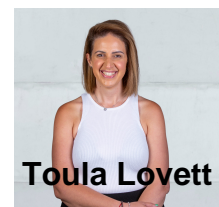
Price: \$650 Per Week

Features:

- 2 Bedroom, 1 Bathroom, 1 Car Space
- Exquisite Location on the Banks of the Yarra River
- Superior Gaggenau Appliances
- Integrated Fridge, Washing Machine and Dryer included
- Beautiful wide engineered Oak floors
- Sustainable 6+ Star Green Living Inside and Out
- World-Class Resident Amenities
- Only a 15min tram ride to the Paris-end of Collins St
- Victoria Gardens Shopping Centre across the road



Toula Lovett



Toula Lovett

lovemillpark@mail.inspectrealest.com.au | lovemillpark@mail.inspectrealest.com.au