



14 Kiewa Street Clifton Hill, VIC



2



1

## Victorian Charm Near Yarra Bend Park

Step inside the stylish spaces of this exceedingly private two bedroom Victorian and discover a surprising low-maintenance lifestyle opportunity. Flanked front and back by private and alfresco gardens, this delightful home boasts light, space and period charm in spades. Traditional bedrooms share a skylit bathroom and open plan living with its huge windows and hardwood floors features a quality-appointed kitchen that links to alfresco entertaining with right-of-way offering potential off-street parking. Near cafes, parks and transport, inspection will impress.

- ? High modern fence makes a smart first impression
- ? Master bedroom with French doors to a front deck & gardens
- ? Sunlit open plan living opens to private alfresco gardens
- ? Quality appliances in a chic kitchen with generous storage
- ? Heating/cooling and ROW access offering potential OSP
- ? Walk to Clifton Hill Station, Yarra Bend Park & local cafes

**Price:** \$1,290,000  
**Inspect:** Saturday, 18th May 2024 10:30 - 11:00



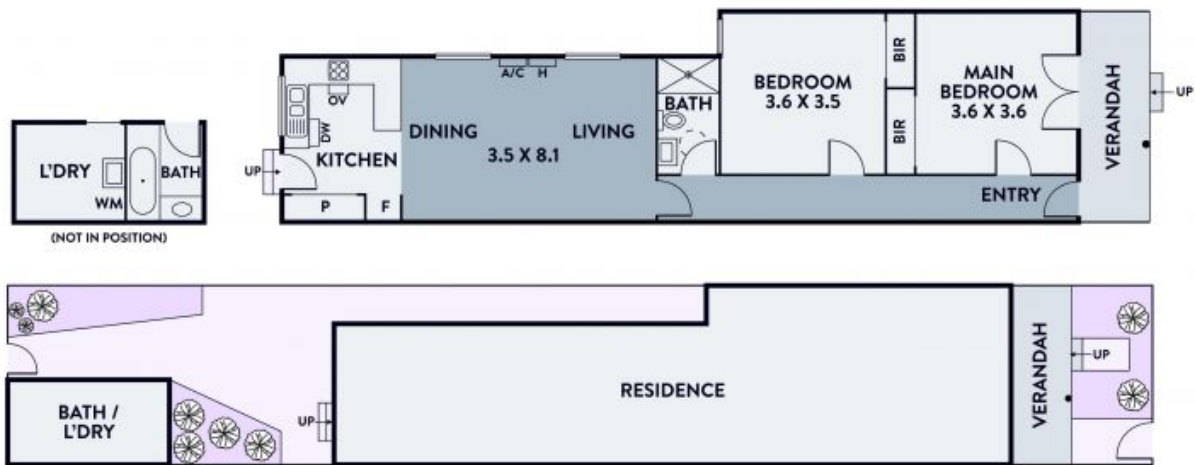
**Eric Brown**

0474870856  
 eric.b@lovere.com.au



**Theo Angelopoulos**

0414 813 160  
 theo.a@lovere.com.au



Every precaution has been taken to establish accuracy of the information in this brochure but does not constitute any representation by the vendor or agent.

**LOVE & CO**

**14 Kiewa Street**

**Clifton Hill, VIC**