



3 Rochdale Square Lalor, VIC

3

1

1

### Unbeatable Value With Five-Star Convenience

Be limited only by your own vision when it comes to deciding the destiny of this potential-rich property, set on a fantastic 609sqm (approx.) north-facing block in the heart of the Rochdale Square shopping precinct.

With the square's large park, shops and medical clinics at your doorstep and sporting facilities, Lalor train station, bus services, Vasey Park Preschool, the buzzing Lalor shopping strip and schools within easy walking distance, a five-star level convenience is a given here.

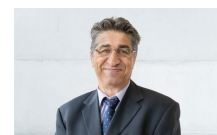
Those inspired to make their mark in such a highly convenient locale will be motivated to transform the bright interior into a contemporary classic, yet with such a generous land component, the temptation will be there to redevelop or start again and build your dream lifestyle home (STCA).

Featuring polished timber floorboards throughout the three spacious bedrooms and large north-facing lounge, stylishly renovated bathroom, plenty of off-street parking and an open-plan meals/kitchen area with a direct view across the undercover entertaining area and huge grassed backyard, you could also move straight in and enjoy living with a superior

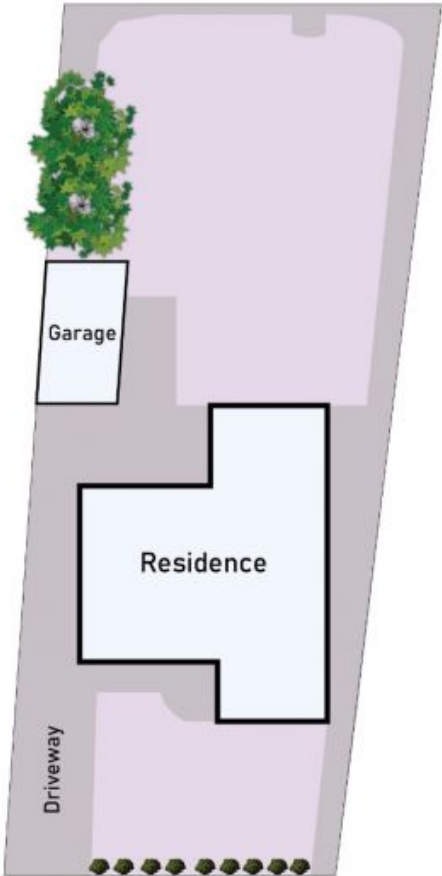
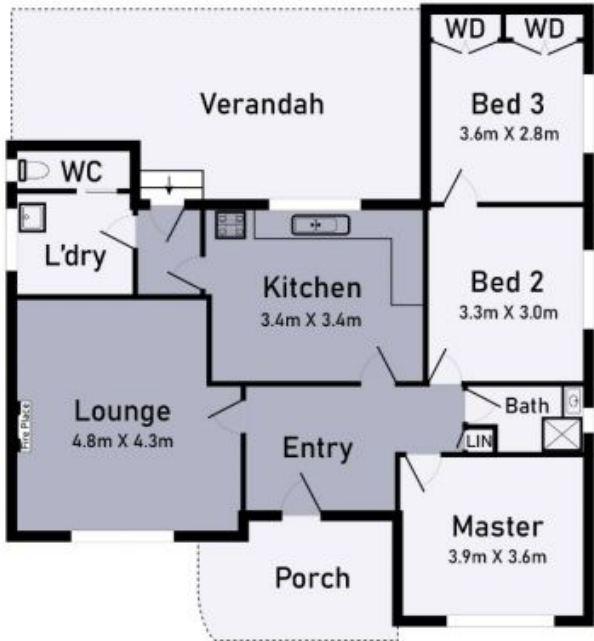
**Price:** Sold \$666,000



**John Gioftsidis**  
0410 522 195  
john.g@lovere.com.au



**Jim Vasiliou**  
0418 123 054  
jim.v@lovere.com.au



### 3 Rochdale Square Lalor

\* Dimensions are approximate and for illustrative purposes only

