

2/235 Childs Road Mill Park, VIC



Spacious Unit In Prime Location!

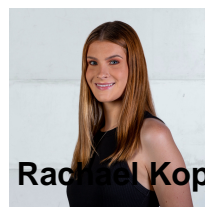
This spacious unit has everything to offer and more, making it a real must see !!!

Price: \$480 Per Week

Situated in prime location and within minutes to amenities such as the newly built South Morang Train Station and adjoining bus services, Westfield Plenty Valley and Stables Shopping Centre's, local primary/secondary schools, sporting facilities including the Y.M.C.A Recreational Centre, parklands, 24 hour medical clinic, cafes/restaurants and so much more, why would you want to consider anything else when you can have it all at your convenience!!!

Comprising:

- 3 Bedrooms
- Built In Robes



Rachael Kopp



Rachael Kopp

lovemillpark@mail.inspectrealest.com.au | lovemillpark@mail.inspectrealest.com.au



DISCLAIMER: Floor Plan measurements are approximate and are to be used as a guide only.

2/235 Childs Road

Mill Park, VIC

LOVE & CO