



4 Burnett Court Mill Park, VIC



3



2



2

A Smart Alternative To Unit Living

Enjoying a premier central location, this bright and beautiful three-bedroom home with the benefit of land offers a smart alternative to unit living in the heart of Mill Park.

Ideal for the young couple with an eye on the future and empty nesters still requiring space for the grandkids, the home's immaculately presented single-level interior invites a host of buyers to begin a new chapter on a low-maintenance 275sqm (approx.) block with a private driveway accessing a single lock-up garage with an additional single carport in front.

Modern timber floorboards flow stylishly throughout the light-filled living and family-sized kitchen, while soft carpeted floors add contemporary luxury and comfort to all three robed bedrooms (ensuite to main).



John Gioftsdis

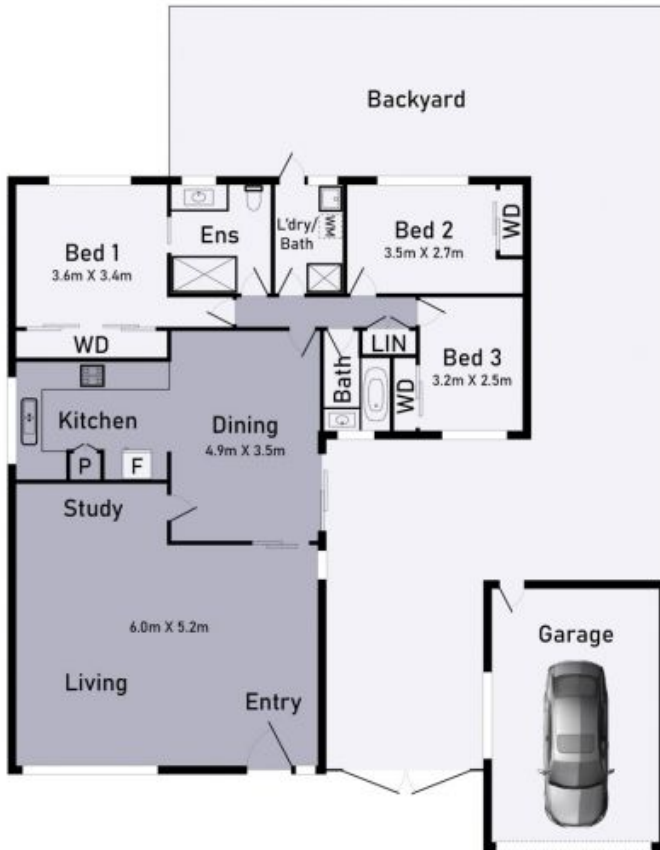
0410 522 195
john.g@lovere.com.au



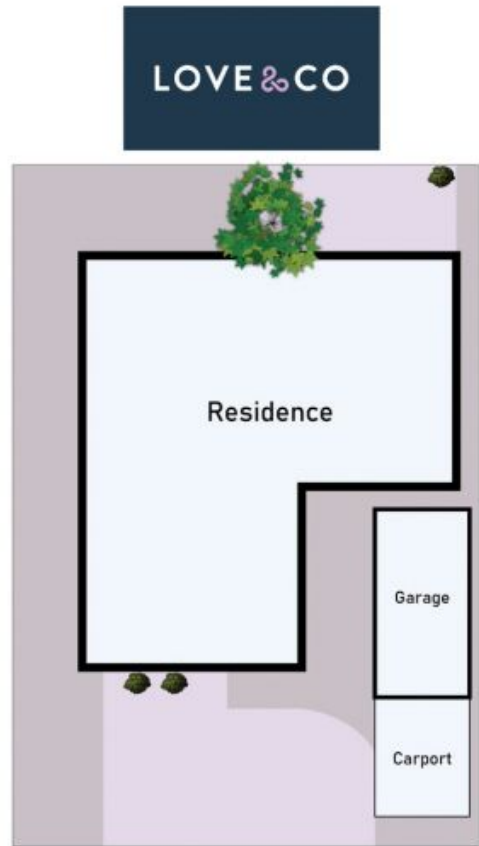
Jordan Knight

0434 969 667
jordan.k@lovere.com.au

Floor Plan



Site Plan



4 Burnett Court Mill Park

* Dimensions are approximate and for illustrative purposes only



LOVE & CO

4 Burnett Court

Mill Park, VIC