



23B Sheila Street Preston, VIC



### The One You've Been Searching For

Distinguished by impressive appointments, this brand new three-bedroom, two bathroom residence is situated for success. Extending across two stylish storeys, it takes living to the next level with a raft of inclusions maximising comfort, style, sunlight, liveability and entertaining credentials. Make the most of close proximity to vibrant Northland shops, cinemas and dining destinations, stretch out on Darebin Creek Trail and revel in the convenience of a position near transport, parks and schools, within the popular Preston High zone.

- \* Luminous living room and feature-packed kitchen/meals
- \* Multiple ovens, stone countertops and soft-close storage
- \* Covered entertaining area and lush adjoining courtyard
- \* Bright double bedrooms, each with built-in or walk-in robe
- \* Chic bathroom, spa ensuite, powder room, security features
- \* Zoned heat/cooling, storage, mountain views, double garage

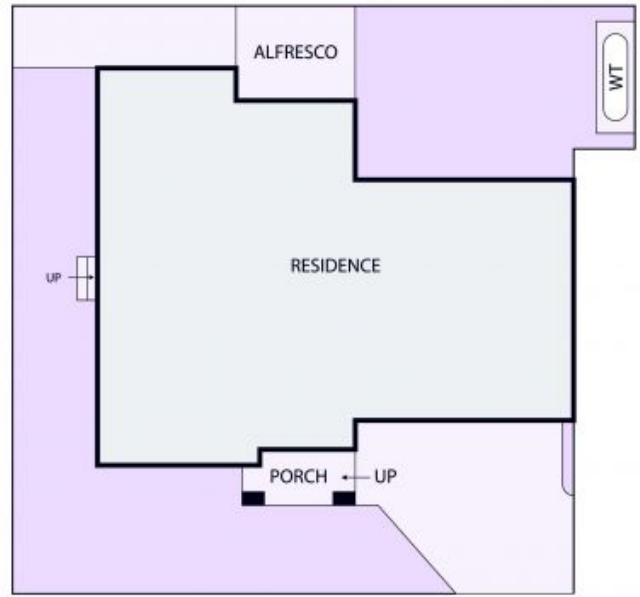
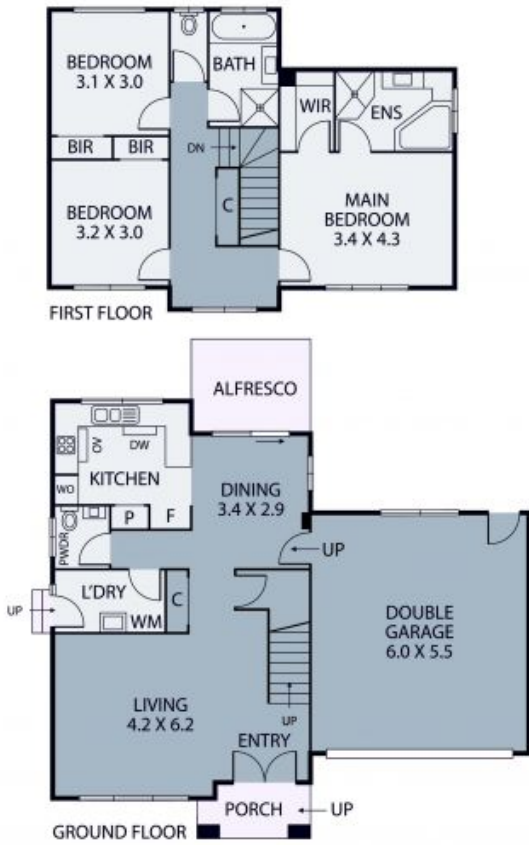
**Price:** \$940,000



**George Theocharis** **Niki Castro**

0415 578 809  
george.t@lovere.com.au

0414 334 900  
niki.c@lovere.com.au



Every precaution has been taken to establish accuracy of the information in this brochure but does not constitute any representation by the vendor or agent.



23B Sheila Street

Preston, VIC