



1/216 Glenlyon Road Brunswick East, VIC



A Vibrant Future Awaits

Encapsulating the ease of an eclectic Brunswick East lifestyle, this modern three bedroom home offers complete comfort and the convenience of living near to local amenities and hip eateries. From the landscaped front garden and secured deck entrance, an invitation is extended to step inside. Here new owners will discover a family-focused floor-plan, beginning with an open plan kitchen, dining and living zone that links to an outdoor undercover entertaining area. The elegant stone kitchen showcases Bosch stainless steel appliances including an induction cooktop and dishwasher. There's also the benefit of a guest powder room and Euro laundry with fantastic storage. Upstairs, the family bedrooms share a study nook, balcony access and a splendid bathroom with separate shower and bathtub. The main bedroom boasts a stylish shower ensuite. Added features also include split system heating/cooling throughout, alarm system, engineered timber floors, carpets and a remote double garage with internal & courtyard access. Ranked one of the top 6 suburbs worldwide, the enviable location of this urban oasis is within close proximity to Brunswick East Village, popular Lygon Street, Brunswick Street shopping district, multicultural Sydney Road, public transport, Merri Creek parklands, Melbourne University, and only a short commute to the

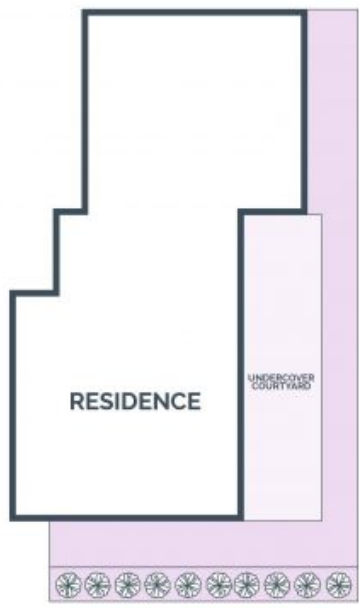
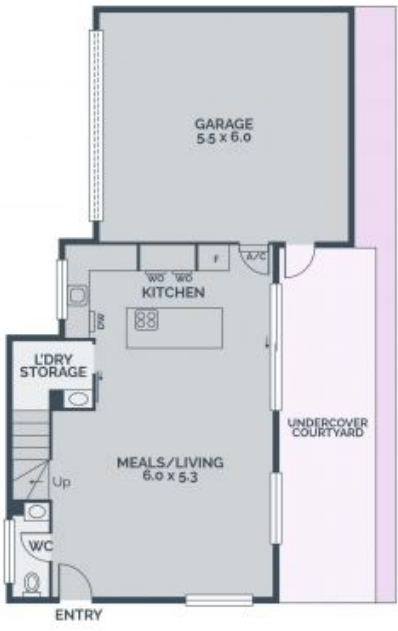
Price: SOLD



Javit Denizhan
0422 055 928
javit.d@lovere.com.au



Javit Denizhan
0422 055 928
javit.d@lovere.com.au



Every precaution has been taken to establish accuracy of the information in this brochure but does not constitute any representation by the vendor or agent.



1/216 Glenlyon Road

Brunswick East, VIC